

**DONALD**

Phone: 5497 1222  
 Articles to:  
 news@buloketimes.com  
 Adverts to:  
 admin@buloketimes.com

# The Buloke Times

Est. 1875

**BIRCHIP**

Phone: 5492 2735  
 Fax: 5492 2863  
 Email:  
 birchipblc@  
 bigpond.com

Published Tuesdays and Fridays  
 PP331336/0000 1

Friday, January 31, 2025

PRICE (inc. G.S.T.) \$2

For the Shire of Buloke, and the districts of Birchip, Charlton, Donald, St. Arnaud, Watchem and Wycheproof

## New Citizenship Awards at Birchip

Birchip Community Forum introduced two new awards in addition to the traditional announcement of the Citizen of the Year, adding to the excitement at the 2025 Australia Day celebrations held at Birchip Memorial Park on Sunday, January 26.

The first announcement from Birchip Community Forum president Steve Nottle, was to award the community event of the year.

### Community Event of the Year

It was on a rainy, cold, miserable night in the middle of winter, but none of the 500 plus attendees cared as all eyes were fixed on watching their kids getting out there having a crack, getting their hands on the ball and absolutely loving it, under the Friday night lights, in the first night game of football ever played in Birchip.

The event itself was the "CVFL Northern Girls' Under-12 and Under-15 Football

Grand Final" hosted by Birchip-Watchem Football Club. Secretary of the Birchip-Watchem Football Club, Stephanie Coffey, said: "It wouldn't have been possible if it wasn't for the hard work and dedication of all our volunteers involved in junior sports and this award is really a thank you to you all, as everyone's volunteer work always goes above and beyond for our junior sport. As we all know, it's more than a game."

### Young Person of the Year

Les Cooper, a young man who has an inspiring story that he recently shared through his winning ABC

Heywire entry, was the inaugural winner of the Birchip Young Person of the Year.

Steve said, "you can't help but be truly inspired by Les, and admire his honesty, his vulnerability and his bravery and he is evidence that 'it ain't weak to speak'."

Les as a student at Birchip P-12 School, has emerged as a significant young leader both within the school and the wider community. At school, Les excelled in his role as president of the

• Continued on page 6.

• Right: Birchip Citizen of the Year Judy Living (centre) with son Felix (left) and husband Gary (right).



• Charlton's Australia Day guest speakers Bronwyn Simpson (left) and Bernice Kenny (right) are pictured with the "Cabbaritta" CWA President, Maria Perger (centre).

## Australia Day Address Celebrates: CWA's Golden Era of Service

(By Jenny Pollard)

A Golden Anniversary filled with many golden highlights is how Charlton's Country Women's Association (CWA) Branch, Cabbaritta will mark its 50th anniversary during 2025.

As the organizing body of Charlton's Australia Day ceremony, a retrospective address on Cabbaritta and CWA outreach was presented by two branch members as part of the recent Australia Day program.

A brief outline of the organisation's rural origins and the evolution of the current branch, along with the diversity of local outreach was

pertinent on a day which celebrated community achievements.

The following is a coverage of this address. Long-standing branch member, Bernice Kenny opened the presentation:

"I want to briefly share with you the impact which the Country Women's Association of Victoria (CWA) has initiated and sustained since

its beginnings in 1928, and which continues to provide direction for our organization today.

"Empathy, support and assistance never go out of style, and while CWA might be viewed as the 'Tea & Scone' ladies, the scope of the organization has, and continues to, extend well beyond the 'kitchen'!

• Continued on page 2.

## Road Safety Reminder

(From the RACV)

The Victorian school year resumes this week, with more than a million students expected to walk through school gates in 2025.

The return to the classroom serves as an important reminder for all road users, not just parents and carers, to be alert for children when driving and understand the road rules around school zones.

According to the Transport Accident Commission (TAC), around seven children aged 0 to 15 die each year on Victorian roads.

RACV General Manager Mobility Julia Hunter encourages everyone to do their part

to make school zones safe. "School zones are crucial areas where road safety must always be top of mind," said Ms Hunter.

"Children are at risk around roads because they are less visible, and have a reduced ability to judge time, speed and distance."

### Plan Ahead

"RACV is encouraging parents and carers to plan ahead, and where possible, consider parking further away from the school, as congestion

increases the likelihood of collisions.

"Consider walking or riding with your children to school while demonstrating safe behaviours. This includes using children's crossings or zebra crossings, meeting children on the same side of the road, and being bicycle safe.

"Children aged 12 and under, as well as accompanying adults, are allowed to ride

• Continued on page 2.



• RACV is urging a safety mindset from motorists around school zones. (Source: Getty Images)

# Civic Values, Media Use and Affective Polarisation

(From Monash University)

People who rely on social media as the main source of news score lower on a measure of civic values than people who rely on newspapers and non-commercial media for news and information, according to a study by researchers at Monash University.

The study was led by Professor Mark Andrejevic and Associate Professor Zala Volcic both in Media Studies at Monash University's Faculty of Arts.

"It has become something of a truism that social media is not great for democracy," said Professor Andrejevic. "But no one has really systematically tested that until now."

The study of more than 2,000 Australians asked people a range of questions about their belief in democratic institutions and practices as well as their openness to considering perspectives that challenge their own. It also asked whether they thought there was such a thing as a shared public interest and how important they thought it was for Australians to inform themselves about political issues and for schools to teach civics.

Almost 60 per cent of respondents who said their main source of information about news and current events is social media fell in the bottom half of the scale. By contrast, the majority of people who relied on newspapers, non-commercial broadcasting (such as

# The Buloke Times

FRIDAY, JANUARY 31, 2025

the ABC), and online news aggregators were in the top half of the scale.

Interestingly, people who relied on commercial TV scored even lower than those who rely on social media: 63 per cent were in the bottom half of the scale. Those who scored highest relied primarily on non-commercial radio (67 per cent in the top half of the scale).

When it came to average scores, people who relied on non-commercial radio scored 11 per cent higher on the civic disposition index than those who said they mainly rely on social media.

There were similar results when the researchers looked at people's pattern of media use: those who were heavy users (more than three hours a day) of commercial broadcast and social media had the lowest scores, whereas heavy users of non-commercial media, hard copy newspapers, and online news aggregators had the highest.

"We also found that people who use a wider range of media sources tend to score higher on the civic values scale," said Professor Andrejevic. He and Associate Professor Volcic collaborated on the study with Research Fellow Isabel Mahoney, and Research Assistant

Fae Gehren (all from Monash's School of Media, Film, and Journalism).

The study does not indicate whether platforms foster lower civic values or simply cater to them. It does, however, raise concerns about social media becoming an increasingly important source of political information in democratic societies like Australia, especially given the renewed emphasis on political posts by Facebook.

The study also sheds new light on the ongoing discussion about media echo chambers and filter bubbles. Professor Andrejevic said the results highlight the importance of understanding not just what information people receive, but their attitude toward it.

"If platforms cater to people who aren't willing to test their opinions and arguments out, providing them with more accurate information might not be enough," he said.

Moreover, it raises questions about the decision by social media moguls to increasingly crowdsource fact checking to users, rather than doing it in-house.

For such an approach to work, both citizen journalists and their readers need to value the role of good-faith deliberation in civic life.

"Overall, the online space might not be the best one to rely on if you're looking for these values," Professor Andrejevic said.

The study was designed in collaboration with Essential Research, which conducts one of Australia's leading and most respected social and political polls. This report is part of a Discovery Project for the Australian Research Council.

## Thank You, "Times Ensign"

Unfortunately, the "Buloke Times" has lately been experiencing problems with its newspaper printing press.

To the rescue – and not for the first time – has come the "Sea Lake and Wycheproof Times Ensign".

Yesterday, the pages of today's "Buloke Times" were sent to Sea Lake, where they were dealt with expertly, making it possible for our issue of today's "Times" to be delivered as usual to our readers.

Our sincere thanks to our Mallee friends for their practical assistance.



## Order Your Rubber Stamps

from the

### "BULOKE TIMES"

McCULLOCH STREET, DONALD - 5497 1222  
Range of type to choose from

## CWA's Golden Era of Service

• Continued from page 1.

"Today, while we have applauded the outreach of the 'Blue Tree Project' (Buloke Shire Event of the Year) for highlighting mental health awareness, CWA was originally formed to provide a supportive link for the soldier settlers' wives who lived in isolation on the newly opened up Mallee landscape.

"Without the technology and transportation we take for granted today, these pioneering women strove in remote and harsh settings, raising families, frequently alone, and without the convenience of a quick phone call when things went wrong.

"In those days no one ever asked them if they were coping.

"CWA was formed to create ways of bringing women together. In rural areas, premises – which became known as CWA Rest Rooms – were secured in towns, where on shopping days, mothers could feed and change their babies, meet with other women, talk and perhaps do some craftwork.

(Doesn't this sound like outlets we have today, which recognize that a "burden shared is a burden halved?")

Supporting the war effort during WWII saw the drive for practical needs being met with the local CWA engaged in activities such as making camouflage nets, knitting socks, and creating care packs to be sent overseas to the soldiers.

"By 1946 changing times saw a new CWA Branch established in Charlton. Known as the 'Younger Set', the focus was on addressing the needs of younger age groups and younger families. Through social occasions such as dances and baby shows, funds raised aided with the establishment of the Infant Welfare Centre and the Bush Nursing Hospital.

"Our current CWA Branch began fifty years ago in 1975 – adopting the indigenous name 'Cabbaritta', which means 'by the water' or 'a bend in the river'.

"A half century of service is a significant milestone and the local community – and beyond – has been enriched by the activities, achievements and resources which our local country women have supplied.

"From hosting events such as the Cancer Council's Biggest Morning Tea, to providing behind-the-scenes support following natural disasters; to adding our voice to state and national matters through the wider CWA organization, and

now encouraging the up-coming generations through our CWA Juniors Group. These are the people who will help to build the future. We currently have 15 junior members, ranging in age from 7-15 years. Girls and boys are welcome, and we encourage young people to consider joining."

### Involvement

CWA member, Bronwyn Simpson, then continued with the branch's community involvement:

"Our branch will celebrate its 50th birthday anniversary this year and as a service group, we play an important role within the Charlton community.

"Supporting friendship is our primary goal. We support local groups such as the Tuesday Crafters, and the Charlton Agricultural Show. The Story Time mats and pillows are an example of our support for the local library program, and the Charlton/Wycheproof Citizen's Band has been a recipient of our fundraising.

"Cabbaritta has supported education for Charlton through many donations to the play groups, kinder and Driver Education. At the local schools we have assisted with activities such as knitting programs, and each year we now sponsor student scholarships. Many local families have also been recipients of the CWA State Education grants, both at secondary and tertiary levels.

"Not everything is fundraising, and we put our thinking caps on each year to decorate Christmas windows and the stage for the Australia Day celebration. We attempt to acknowledge every baby born in the 3525 postcode area with a handmade gift.

"Cabbaritta Juniors have met for activities for more than ten years now, and this

has even included some young lads who enjoy expanding their creative skills.

"Where would we be without the community coming together as we host the Biggest Morning Tea for cancer fundraising each year? A lot can be said for a chat over a cup of tea and a nice slice!

"As we probably know, CWA is well known for their scones. The OK Motels Festival visitors always compliment us and we serve approximately 200 scones for that event. This year four of our members were among the 170 members from around Victoria who volunteered at the Melbourne Royal Show. There were 16,420 handmade scones made over the eleven days of the Show, and for those interested, this required: 1,026 kilograms of self-raising flour, 246 litres of milk and the same of cream. The 'Royal' is the biggest fundraiser for the Association and these funds contribute greatly to the running of the organization. Together with the donations to the community emergency and welfare funds which each branch contributes to, CWA is able to support individuals and communities in need. Charlton has been a grateful recipient, especially in times of floods in our town.

"Our organisation's theme – Care, Empower, Contribute – can be seen within our membership and within our community. Even if the CWA isn't for you, I am sure you could take up the mantra with any other group or sporting association in town. Country towns really thrive with volunteers, and Charlton is better for each contribution that you make.

"Thank you, and I wish you all a very happy 2025 Australia Day".

## Road Safety Reminder

• Continued from page 1.

on the footpath in Victoria. All children and adults riding on the footpath must still wear a helmet.

"Parents may think that providing their child with an e-scooter may help with the school commute and congestion; however, these are in fact illegal for children under 16 to use on our roads and footpaths."

Some school speed zones are permanent and in effect 24/7, while other school speed zones are only operational during certain hours and days. These time-based school speed zones are usually in effect between 8.00 a.m. to 9.30 a.m. and 2.30 p.m. to 4.00 p.m. weekdays during Victorian school terms (excluding public holidays).

School speed zones are usually reduced to 40km per hour on roads where the regular speed limit is less than 80km per hour. Where the

regular speed limit is 80km per hour or more, the school speed zone usually reduces the limit to 60km per hour.

### Advice

RACV has the following advice for drivers during school pick-up and drop-offs:

Stay alert: Be patient, aware, and exercise caution when driving through school zones. There will be a lot of excited children walking and riding around roads, car parks and driveways, especially during the busy pick-up and drop-off times.

Observe speed limits: Keep a keen eye out for change of speed limits and reduce your speed before entering school speed zones.

Reduce distraction: Ensure that mobile devices and other distractions are out of reach or turned off while driving.

Be mindful of school buses: Give way to a bus moving into the traffic and be

careful of children exiting and entering buses.

Consider parking further away: Park your car a few blocks away and walk to encourage a more active lifestyle, while helping to alleviate congestion.

Consider turning your engine off: Don't idle your engine as you wait. Studies from around the world suggest idling engines in traffic and around schools are detrimental to children's health.

Use children's crossings or zebra crossings: Look out for the bright orange "children crossing" flags. Whenever those flags are displayed, road users must stop for any pedestrians waiting to cross. This applies regardless of whether a crossing supervisor is present. Remain stopped until the crossing is clear and do not block crossings.

For more information on road safety around schools visit racv.com.au



# Anywhere. Anytime. Anyone.

Police are out there to keep you safe. If you still choose to take risks while driving and break the road rules, chances are you will be caught.

**TAC**

**VICTORIA**  
State  
Government



**DEATH COATS.**— John Vincent of Jeffcott passed away peacefully on Jan. 28th 2025, aged 84 years.

Loving husband of Betty (dec.). Loved dad of Lisa (dec.), Damon, Heather, Valetta and father-in-law of Neil, Peggy, Simon and Glenn. Adored grandpa of Bethany & Daniel, Joshua, Hannah & Lars; Shannon, Angus, Shae; Mykaela & Jordan, Cameron, Calliope; Ryan, Chloe, Lachlan and proud great-grandpa of James and Matthew.

An *ILFRACOMBE* lad, now reunited with Betty and Lisa.

**COATS.**— John Vincent 20/03/1940 - 28/01/2025

Loving memory of a brother, brother-in-law, uncle and great-uncle many times over.

You have run your race, so now you can rest easy.

Will miss your pop-in visits.

Carolyn, Gus (dec.), Robert, Adrienne & Eric, Deidre & Dave and nieces & nephews.

**Have You Got Something to Sell?**

Try an advert in



Over 2000 readers will see your adv. every issue, giving you the best chance to move your sale item.

Phone 5497 1222 or email: [advertising@buloketimes.com](mailto:advertising@buloketimes.com)



**AMBULANCE PHONE NO. 000**

**DEATH FOOTT.**—

Michael Joseph 17/07/1935 - 27/01/2025 Passed away peacefully surrounded by loving family at Alcheringa, Swan Hill.

Loving husband of Margaret for 68 years.

Much loved father and father-in-law of Stephen and Kathryn, loved "Mick" of Hugh and Bernice, Lach and Tammy, Madeleine and Ben.

Much loved father of Vincent, and grandfather of Brenton and Julia, Adele and Sam, Declan and Tahlia, Imogen and Lachie.

Much loved father of Kieran, Marita and Jason (dec.).

Much loved father and father-in-law of Peter and Jenny, and grandad of Zane and Kirsten, Aidan and Annalise.

Loved great-grandfather "Mick" to Scarlett, Wilhem, Lincoln and Addison; Marlow, Max and Eadie; Angus, Hamish and Dot-tie; Oliver and Patrick.

Beloved son of the late Hugh Schwartz and Margaret Mary (Murphy) Foott. Loved brother of Tess, Pat, Jack, Francis, Bernard, Eileen, (all dec.) and Margaret.

Rest in Peace

**FUNERAL COATS.**—

A celebration of John's life will be held in St Andrew's Uniting Church Donald on Tuesday, February 4, commencing at 9.30 a.m.

The cortege will then leave for the Donald Lawn Cemetery.

Recorded service at [www.kellfunerals.com.au](http://www.kellfunerals.com.au)

KELL FUNERALS ST. ARNAUD 5495 1043 NFDA EST. 1860

Printed and published for the proprietors by Robin Letts, at the office of "The Buloke Times", 6 McCulloch Street, Donald.

**FUNERAL FOOTT.**—

Michael Joseph

Requiem Mass will be offered for the repose of the soul of Mr Michael Joseph Foott at St Mary's Catholic Church, 62 Splatt St, Swan Hill, on Wednesday, February 5, commencing at 10 a.m..

Burial will follow at Swan Hill Memorial Park, Section Lawn D Garden East.

Tributes can be left on our website.



**DONALD FIELD & GAME Memorial Shoot**

75 ASF (LVJ HCP) SUNDAY, FEB. 2 10 a.m. start

Proudly sponsored by The Sellick Family, The Elsom Family and Mackenzie Transport.

**Twilight Tennis IS BACK AGAIN FOR 2025!**

Wednesday nights, beginning at 6 p.m.. Two sets (to 8 games) per person per night.

February 5th, 12th 19th and 26th

Venue: DONALD LAWN TENNIS COURTS

Preference for entry is as a team of 4 (with players' names and team name).

Individual entrants will be placed in a team.

Cost: \$40 per person in total. This includes tennis and BBQ tea (meat and salad) for all four weeks. Drinks are also available at bar prices.

Enter teams and names to: Stuart.Potter@education.vic.gov.au or text 0439 971 362 or enter on Donald Lawn Tennis Club's Facebook page.

All welcome!

**"Times" Classifieds**

**WANTED ROOM TO RENT**  
17 y.o. female looking to rent, board or share house in Donald. working locally. Ph. 0439 166 560.



WYCHEPROOF PUBLIC CEMETERY TRUST  
**ANNUAL GENERAL MEETING**  
Tuesday, Feb. 4  
WYCHEPROOF COMMUNITY RESOURCE CENTRE  
7.30 p.m.  
ALL WELCOME

**MOVING HOUSE GARAGE SALE**  
34 Watson St, Birchip  
**Saturday, Feb. 1**  
9 a.m. to 3 p.m.

Loads of indoor and outdoor items. Powertools, shed items - all items must go! **Come grab a bargain!!!!!!**

Some items you will see on the day:

- Log splitter (Petrol Hydraulic)
- Bookshelves
- Petrol Post hole digger
- Fridge/Freezer - with ice dispenser
- Books
- Christmas decorations
- Household items
- Hand tools
- Exercise equipment.

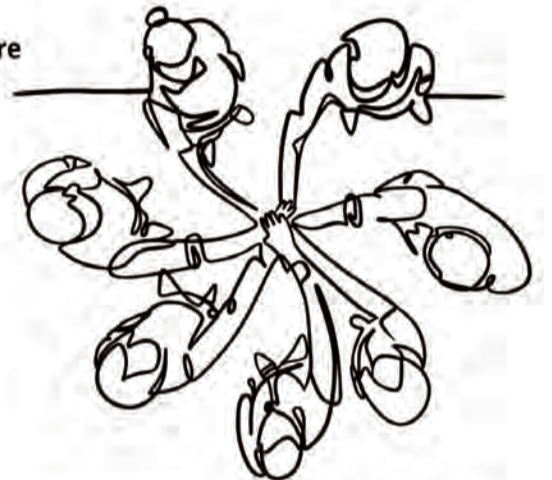


**FULLY FUNDED WORKSHOPS**

**BOORT**  
Thursday March 6th  
9.30am - 1pm  
Boort Resource & Information Centre  
119-121 Godfrey Street



**DONALD**  
Thursday 6th March 2025  
2.30pm - 6pm  
Donald Community Centre  
31 Woods St



Being able to help people in times of crisis is an important role, and we want to ensure that you have all the tools and the confidence you need to effectively help those in need within your family, friendship circles, workplaces and community, each and every time.

Scan code to register or visit our website [www.lifelinelm.org.au/workshops](http://www.lifelinelm.org.au/workshops)

**safeTALK**

A half-day alertness workshop that prepares anyone to become a suicide alert helper.

This activity is supported by funding from Murray PHN through the Australian Government's PHN Program.



Flynn  
**ST JOSEPH'S PRIMARY SCHOOL, CHARLTON**

**Mensland**

OUTFITTING MEN SINCE 1959

**AMAZING MEN'S & BOY'S T-SHIRTS**

- Levi's
- BLACKWOOD SILENT THEORY
- COUNTRY ROAD ELLESSE SAINT G
- Wrangler
- RIP CURL
- NEW RANGE OF UNIT

Priced from \$39.99 to \$90.00

**SPECIAL Plain Work Shirts \$14.95**

Just ring or email [mensland@inet.net.au](mailto:mensland@inet.net.au) and we will deliver your order.

For Promotions, Specials and Competitions, us on Facebook



70 Woods Street, Donald — 5497 1211

## "Times" Classifieds

Phone Donald 5497 1222, Birchip 5492 2735  
Email [admin@buloketimes.com](mailto:admin@buloketimes.com)

**Deadlines:**— Tuesday's Issue: Display advertisements (2 or more columns), 3 p.m. Friday prior.  
Friday's Issue: by 3 p.m. Wednesday prior.

## SIGNS 'R'US

**BUSINESS FOR SALE  
OR LEASE**  
by June 2025  
Phone 5497 1624;  
Mob. 0409 959 046

An advert. in  
"The Buloke Times"  
can cost as little as \$10,  
and up to 5,000 readers  
will see it.



## SOLICITOR

116 Napier Street,  
St. Arnaud  
**Experienced practical  
advice in plain English**

Appointments also  
available in Charlton,  
Donald and Wycheproof

**Ph. 5495 2595**  
[Karen@klp.net.au](mailto:Karen@klp.net.au)

## VFF REGION MEETING

### Getting Back on Track

Members of the community welcome

*Guest Speaker:* new president Brett Hosking

Forum What Worked in 2024 -2025

Panel Farmers and Agronomists

Marketing

Business

**Wednesday, February 12**

**5.30 p.m. for 6 p.m. START**  
ST ARNAUD SPORTING CLUB

RSVP by 4th Feb (meal) to:

B. Batters 0418 567 674

C. Coates 0427 693 329

## Natural Capital projects officer

### Wimmera CMA

Horsham, Victoria

(Parental leave position)

12 months Temporary, up to .5FTE

Salary: \$73,413 - 80,703 pa (pro-rata)

**Are you looking for the next step in  
your career? Have you considered  
regional Natural Resource  
Management?**

Wimmera CMA is seeking a suitably  
experienced candidate with an understanding  
of Wimmera communities and our agricultural  
landscape and an interest in working  
alongside local farmers.

The purpose of the role is to support  
Wimmera CMA to meet sustainable  
agriculture-related project delivery obligations  
to both the Victorian and Australian  
Governments and build a flexible and adaptive  
organisation that capitalises on emerging  
opportunities around natural capital and  
drought resilience.

The Wimmera CMA provides a workplace and  
work practices that embrace, reflect, respect  
and promote the diversity of our community  
and support inclusion and participation for all.

Visit [www.wcma.vic.gov.au](http://www.wcma.vic.gov.au) to download a  
position description and key selection criteria.  
Applications close **10.00am Monday  
February 10 2025.**

**For further information please contact Joel  
Boyd on 0429 949 196.**

Phone: 03 5382 1544  
24 Darlot St Horsham

[www.wcma.vic.gov.au](http://www.wcma.vic.gov.au)



Wimmera CMA



Cultivating Healthy Communities

## JOB OPPORTUNITIES

Donald

Junior Food & Domestic Service Assistant

Associate Nurse Unit Manager

Nurse Unit Manager

Further information available at  
<https://ewhs.org.au/careers>

EWHS is an Equal Opportunity Employer, we welcome  
applications to all positions from Aboriginal and Torres Strait  
Islander People, LGBTQI+ People, and People of All Abilities.



DONALD

### EMPLOYMENT POSITION

Goodwin Village operates a 38 bed residential  
aged care facility. 25 retirement living units and  
has 7 community care clients.

**FOOD & DOMESTIC**  
(full or part-time 24 to 38 hours per week)

There is a position for a full or part-time food &  
domestic services assistant. The position involves  
working as a cleaner, and the kitchen in our  
residential care building.

Further information about the position including  
position description is available from the Chief  
Executive Officer.

#### Key Selection Criteria

The position requires applicants to have the follow-  
ing attributes:

- Reliable, with a good work ethic, with a focus to  
meet the care needs of all individual Goodwin  
Village consumers.
- an empathy for elderly people,
- an ability to work individually, in a team  
environment,
- a commitment to assist with the continuous  
improvement of Goodwin Village processes.

Applications for the positions must be made in  
writing by 5 p.m., Friday, February 14, 2025.

Goodwin Village,  
22 Camp Street, Donald,

Telephone: 5497 1304 Facsimile: 5497 1769.

Email: [ahogan@goodwinagedcare.org.au](mailto:ahogan@goodwinagedcare.org.au)

Anthony Hogan,  
Chief Executive Officer.

## Landcare Facilitator

### Wimmera CMA

Horsham, Victoria

(Parental leave position)

12 months Temporary, up to .5FTE

Salary: \$73,413 - 80,703 pa (pro-rata)

**Are you looking for the next step in  
your career? Have you considered  
regional Natural Resource  
Management?**

Wimmera CMA is seeking a Landcare  
Facilitator to service the Yarriambiack Shire  
area as part of the Victorian Government's  
Victorian Landcare Facilitator Program.

The purpose of the role is to support local  
Landcare and environmental volunteering  
groups, and the Yarrilinks Landcare Network,  
to build capacity and resilience, and  
undertake works for the protection,  
enhancement and restoration of the land and  
natural environment in this important part of  
our region.

The Wimmera CMA provides a workplace and  
work practices that embrace, reflect, respect  
and promote the diversity of our community  
and support inclusion and participation for all.

Visit [www.wcma.vic.gov.au](http://www.wcma.vic.gov.au) to download a  
position description and key selection criteria.  
Applications close **10.00am Monday  
February 10 2025.**

**For further information please contact Joel  
Boyd on 0429 949 196.**

Phone: 03 5382 1544  
24 Darlot St Horsham

[www.wcma.vic.gov.au](http://www.wcma.vic.gov.au)



Wimmera CMA

## Keep Abreast with Local Happenings!

Don't forget Your Local Newspaper



Available from all district  
newsagents, or direct from the  
"Times" Offices, Donald or  
Birchip; or ring the Donald  
office (5497 1222) to arrange email  
or postal delivery.

The Buloke Times  
Est. 1875

# Coloured Photographs

Copies of "Times" photos can be  
purchased from our office/s.

Photos not published may also  
be available.

Call in to our offices,  
McCulloch Street, Donald,  
phone 5497 1222;  
or Cumming Avenue, Birchip,  
phone 5492 2735

Enjoyment & Employment —  
Have Both, Shop in Your Own Town!

# New Citizenship Awards at Birchip

• Continued from page 1.

Birchip P-12 School Student Board, and under his leadership, the student board organised several initiatives throughout the year, including celebrating the school's 100th anniversary with a 1924-themed day featuring games, activities, and an Easter egg hunt, organising a Winter Sports Day for Years 7-12 in collaboration with Donald High School and promoting awareness and raising funds for important causes through activities for MND Day, Wear It Purple Day, and R U OK Day.

Les's contributions extend beyond his school environment. As the junior vice-president of Calder United Cricket Club (and formerly Nullawil Cricket Club), he co-coaches the junior cricket team and co-ordinates the Cricket Blast Junior Program. He also serves as an umpire for junior cricket and personally curates the cricket pitch at Nullawil, ensuring the grounds are ready for games each Saturday.

Additionally, Les is an active member of the CFA in Nullawil and contributes to the local football club as a wellbeing team member, showcasing his dedication to fostering the importance of a supportive community.

Les embodies what it means to be a young leader,

an active volunteer, and a dedicated community member. His unwavering passion for supporting his local community, school, and sports organisations makes him a truly deserving winner.

## Citizen of the Year

The climax of the award presentation was the announcing of citizen of the year, which was bestowed on Judy Living.

Born and raised in Birchip, Judy is a dedicated community member, contributing to the community with her passion for supporting returned veterans and their families.

Judy has been a legatee for the Birchip area for 12 years and counting. A legatee is the cornerstone of Legacy; a volunteer member who makes a personal commitment to assist families of veterans of the Australian defence force, who gave their lives or health, in service to our country.

Judy was also nominated and served on the board of the Legacy foundation, which is responsible for allocating funds to Legacy branches for assistance to widows and their families.

A true advocate in this space, Judy was one of the first Vietnam veteran widows to speak publicly on the effects of agent orange on Vietnam veterans, and in recent

years has presented to the royal commission into defence force suicide.

## Commitment

Judy's commitment to the local Birchip community includes twenty years of dedicated service to the Birchip Bush Nursing Hospital/East Wimmera Health Service, seven years as a volunteer with the Birchip CERT team providing 24/7 emergency medical first response, treasurer of Birchip RSL, member of Birchip choir "The Chocolate Sundays", and for the past twenty-five years, Judy has been co-proprietor of the Birchip Hardware, servicing the town with husband Gary.

In these roles alone Judy is a very worthy candidate; however, her greatest contribution to community is one which is far more difficult to measure. This is her deep understanding of people, their needs, and her unbounded kindness and generosity in caring for others.

There are many people in the Birchip community who can recount stories of when Judy was there for them in moments of need, and after those moments have passed.

These contributions are described as gentle, humble, and deeply impactful. They are not front and centre for all to see, but are carried out quietly, privately and with the utmost sensitivity.

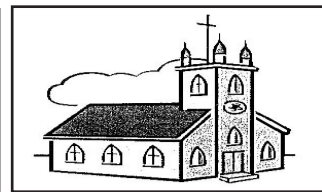
Judy is a true example of service above self, those who dedicate themselves not for recognition, but because they believe in helping others.

On receiving the award from previous winner Maureen Donnellon, Judy was too shocked to make a long response, but her pride was evident, and she did acknowledge the role her father had played in her journey, saying, "I am committed to following on in my dad's footsteps, as he was instrumental in getting a lot of things done in this town."

Steve concluded the presentations by congratulating the winners and reiterating that volunteering is rewarding and although Birchip may be small, it is a great town, with great people and fantastic resources.

Steve encouraged the community to "dream big and

think hard, because we may live in the lucky country, but we make our own luck here. No matter what life throws at us, seek out opportunities to contribute, to participate and to action change. Resilience has helped us overcome recessions, droughts, floods and a global pandemic — and it will carry us through whatever challenges lie ahead".



## UNITING CHURCH (North Central Living Waters Cluster)

Donald, 10 a.m.

Wycheproof, 10 a.m.

Birchip, 10 a.m.

Contact Number: 5497 1033

## CHURCHES

### ANGLICAN "Parish of Charlton-Donald"

Enquiries: Rev'd Judi Bird  
0435 593 359

Friday, January 31  
St. Paul's, Birchip, 5 p.m.

Sunday, February 2  
St. Martin's, Charlton, 9 a.m.  
St. George's, Donald, 11 a.m.  
Holy Trinity, W'burn, 3 p.m.



• Les Cooper Young Person of the Year.



• Connelly Ryan, Felicity and Stephanie Coffey accepting Community event of the year from Birchip Community Forum president Steve Nottle and daughter Beatrix.

# DONALD LINO PRINT WORKSHOP




**Saturday 15th Feb • 10:30am - 3:30pm**

**DONALD TRAIN STATION**

**NO COST • LUNCH PROVIDED • 15 PLACES AVAILABLE**

**BOOKINGS PLEASE CALL CUSTOMER SERVICE 1300 520 520**

THIS INITIATIVE IS FUNDED BY THE AUSTRALIAN AND VICTORIAN GOVERNMENT'S COMMUNITY RECOVERY HUBS PROGRAM

# THE NATIONALS

*for Regional Victoria*

# PUB POLITICS

WITH JADE BENHAM MP

REGISTER NOW

Sun 2 Feb, 2025  
2:30pm - 4:30pm

TO DISCUSS IMPORTANT  
LOCAL ISSUES

03 50 21 2828

Terminus Hotel, Wycheproof



125.75 HA 'WATCHEM WEST' 310.73 Ac

## QUALITY WIMMERA CROPPING COUNTRY

Massey - Bangerang Road, Watchem West

- Meticulously farmed property utilising modern farming practices.
- Productive mixed soils consisting of fertile grey and chocolate loams with slight undulations of red loams.
- Wimmera Mallee pipeline water with 23650 ltr poly tank c/- boomspray coupling & stock trough.
- Cropped to Canola in 2024 (gypsum applied pre sowing), Canola stubble mulched and summer sprayed ready for 2025 seeding.
- All weather access via gravel road, well fenced as new 7-line on the two road boundaries.

### EXPRESSIONS OF INTEREST INVITED

Closing Wednesday, February 26, at 12 noon.  
Inspection by appointment with the agent.



Jason Rice  
0417 087 019

## "Times" Crossword

### QUICK PUZZLE NO. 8162 - SOLUTIONS

Across - 1, Save. 7, Audacious. 8, Riot. 9, Curt. 10, Loot. 11, Brag. 14, Ornamental. 16, Centimetre. 19, Dane. 22, Plug. 24, Down. 25, Port. 26, Interfere. 27, Weir.  
Down - 1, Shrub. 2, Viola. 3, Autumn. 4, Bantam. 5, Till. 6, Automaton. 12, Repellent. 13, Goat. 15, Need. 17, Modify. 18, Thwart. 20, Alone. 21, Enter. 23, Grey.

# A Life-Changing Experience... Kokoda Trail Scholarship

The Kokoda Trail scholarship recently announced by Nationals' Member for Mildura, Jade Benham, will be named the Farnsworth Lochhead Lowe Scholarship.

The naming of the scholarship recognises the following fallen soldiers who did not return to their families and lay in Bormana Cemetary, PNG:

- VX15468 Warrant Officer John Lochhead, of Mildura killed in action 29/11/1942 northern beaches campaign, aged 29.
- VX25669 Pte Raymond Farnsworth, of Merbein killed in action 8/9/1942 at Brigade

Hill, aged 24. Grave B3.C.10.

- VX45512 Lance Corporal Edward Lowe, of Red Cliffs died 14/9/1942 at Ioribaiwa Ridge aged 27, Grave A1.D.

Ms Benham said the naming of the Scholarship, made in consultation with the Mildura RSL Sub-Branch, recognises the service of these fallen soldiers who made the ultimate sacrifice while serving their country.

### For High School Students

The Farnsworth Lochhead Lowe Scholarship program will offer this year's year 10, 11 and 12 students in our region the opportunity to honour the district's wartime history while embarking on a life-changing experience.

This unique scholarship supports participants to trek the historic Kokoda Trail, gaining a deeper understanding of the sacrifices made during World War II and the values of courage, endurance, mateship, and sacrifice.

Ms Benham is encouraging local families with ties to the Kokoda campaign and who share a passion for preserving Australia's military heritage to contact her office with any other names to add to her register of those who served as the team will be walking in their footsteps and learning their stories.

"I want to make sure that we have as much local knowledge as possible so we can delve into those stories whilst on the trail," she said.

"The Kokoda Trail is not just a physical challenge; it's a journey of reflection and learning.

### Opportunity

"This scholarship provides an incredible opportunity for



• Jade Benham.

our young people to connect with our history, honour the legacy of our veterans, and grow as future leaders."

Information about the scholarship and the application process will be sent to schools at the beginning of the school year. Local families with connections to Kokoda or young people eager to seize this opportunity are encouraged to contact Ms Benham's office for any further information.

Local businesses who are interested in financially supporting this scholarship or being involved in the program are also encouraged to contact the office of Ms Benham.

The Nationals are dedicated to ensuring regional communities have representation in this significant program which they have been part of since 2015.

## FOR LEASE BY TENDER Ninyeunook District

### 930 Acres Cropping and Grazing Land

As a whole or 2 separate lots.

Lot 1 - Kerrigan & Marys - 560 acres - 2 paddocks

Lot 2 - Pymers & Taylors - 370 acres - 2 paddocks

Terms of Lease include:

- 2 year term commencing February 2025
- Paddocks known as Pymers and Kerrigans to be sown both years of lease period.
- Further terms and conditions regarding weed control etc included on lease agreement.

Tenders close: Friday, February 14, 2025 12 noon.

Tender forms available from the selling agent.

Inspection by appointment only.



Elders Wycheproof  
03 5493 6400  
Jim Coffey 0419 830 682

## ADVERTORIAL

# Addressing local queries: Land acquisition, fires, building nearby, insurance



In this update we address some of the latest questions raised about Wilkur Energy Park. If you have a query, call 5421 9999 or email [info@WilkurEnergyPark.com.au](mailto:info@WilkurEnergyPark.com.au).

### Can WestWind compulsorily acquire land for the wind farm?

No, we cannot. As a private business, WestWind does not have any rights to compulsorily acquire land.

The process of securing land for a wind farm is entirely based on collaboration and voluntary agreements with landholders.

This approach ensures mutual understanding and trust while offering significant benefits and protections for landholders throughout the project's lifespan—including during decommissioning.

By working together, we aim to create outcomes that are fair, sustainable, and beneficial for everyone involved.

### Do wind turbines catch fire?

We understand that fire safety is an important concern for the community. It's important to note that wind turbine fires are extremely rare.

Over time, significant advancements in the planning, design, and construction of wind turbines and wind farms have further reduced the already low risk of fire, ensuring even greater safety and reliability.

### How often do turbines catch fire?

It is difficult to find accurate data on the frequency of wind turbine fires. Some international studies estimate that globally wind turbines may catch fire at a rate of 1 in 1,710 per year.

With improvements to turbine technology and quality collaboration with firefighting authorities on wind farm design and operation, the likelihood of turbine fires has reduced even further in recent years.



### Who responds to fires at wind farms?

In Victoria, the CFA play an essential role in responding to fires in regional and rural areas.

As an organisation, they have taken a highly proactive position to ensure safety at renewable energy projects. The CFA created Australia's first guidelines for the design and construction of renewable energy facilities.

When a project is being developed, the CFA's Specialist Risk and Fire Safety Unit works with regulators and industry to ensure that fire risk management is considered in the facility's design and operation to minimise risk.

This produces comprehensive emergency response plans and operation procedures in the unlikely event a fire occurs. In preparation for project construction and operation, CFA leaders will ensure local brigades are fully aware and trained to respond to fires at wind farms.

Read more on the CFA and renewable energy projects in the Summer 2024 issue of their Brigade publication (scan the QR code at right).



### Can neighbours build near the wind farm?

Yes, it is possible. New dwellings (homes) can be approved to be built within a wind farm's setback area in Victoria. This relies on the landholder planning the dwelling to work closely with the project developer and local Council to address any concerns about reduced amenity for the dwelling.

### Will the wind farm increase insurance premiums?

No. The Insurance Council of Australia has stated that insurers don't have specific concerns about insuring properties that neighbour clean energy infrastructure.

You can read more on this topic in the Clean Energy Council's factsheet *Renewable energy property prices and insurance* ([www.cleanenergycouncil.org.au/fact-sheets](http://www.cleanenergycouncil.org.au/fact-sheets)).

### Looking for more answers?

Scan the QR code below to visit our FAQ webpage for answers to a wide range of frequently asked questions.

If you can't find what you're looking for, please call (03) 5421 9999 or email [info@WilkurEnergyPark.com.au](mailto:info@WilkurEnergyPark.com.au).



PO Box 433, Gisborne Vic 3437  
(03) 5421 9999 | [info@WilkurEnergyPark.com.au](mailto:info@WilkurEnergyPark.com.au) | [www.w-wind.com.au](http://www.w-wind.com.au)

# St. Arnaud Citizens Share

## Dedicated St. Arnaud volunteer John Beggs and Glenorchy historian Linda Fearon are Northern Grampians Shire Council's Citizens of the Year for 2025.

They headline an impressive list of winners of the municipality's Australia Day Awards, announced at ceremonies in St. Arnaud and Stawell on Sunday.

Mayor Karen Hyslop said there was plenty of competition for this year's accolades, with councillors selecting winners from a strong pool of applicants in both Kara Kara and combined Central and Grampians ward divisions.

"We are very blessed in Northern Grampians Shire to have so many people and groups volunteering their time and expertise to ensure our community thrives," she said.

"It was a pleasure to pay tribute to some of them on Sunday, as we took the opportunity to reflect, respect and celebrate how lucky we are to live in such a vibrant and caring place."

### St. Arnaud

The municipality's Australia Day festivities started in St. Arnaud with a community breakfast courtesy of the town's Lions and Rotary Clubs. Eleanor Parry sang the national anthem, supported by St. Arnaud Citizens Band, while local Australia Day ambassador Barry Batters addressed the crowd. The

official ceremony culminated in the announcement of this year's award winners.

"The Citizen of the Year award recognises the exceptional contributions and tireless efforts of an individual who goes above and beyond to make our community a better place," Cr Hyslop said.

"This year's winner, John Beggs, arrived in St. Arnaud in 2018 and from the moment he set foot in our town, he made an immediate and lasting impact.

"Within no time, John became involved with the Lions Club, and since then, his contributions have been outstanding."

Mr Beggs has served St. Arnaud Lions Club as president and secretary and remains a dedicated participant in all the club's activities. He also played an integral role in organising the town's Good Friday Appeal efforts for the Royal Children's Hospital, last year helping raise one of the group's largest ever amounts for the appeal.

Mr Beggs was also involved in the Lions' Christmas Procession; organised a welcome event for both new and long-standing citizens of St. Arnaud; has served as St.

Arnaud Football Club treasurer for four years; Senior Citizens Club vice-president and RSL secretary; and is the Lions Club representative on the St. Arnaud Show Committee.

"His involvement in local organisations is truly remarkable," Cr Hyslop said. "What truly sets him apart is his willingness to step in whenever needed – we are incredibly fortunate to have him as part of our community."

### Other Kara Kara Awards

DustyRaiyn McIntyre is Kara Kara ward's Young Citizen of the Year for 2025.

"DustyRaiyn is an extraordinary young person with quiet determination and competence who is always striving to make a positive difference in the world around her," Cr Hyslop said.

DustyRaiyn has been an active participant in the Rural Youth Ambassador Program and Youth Parliament, working to amplify the voices of young people. As part of the Buloke Loddon Rural Youth Network, she co-designed and ran cooking classes in Charlton and Birchip. She has also contributed significantly to

the Martha Haylett Youth Advisory Council in Rippon and took the initiative to create, run and fundraise for a Youth Space at the Raillery Hub.

"DustyRaiyn has been an active member of the St. Arnaud community and her long list of achievements is even more impressive given her age," Cr Hyslop said.

### Senior Citizen

Senior Citizen of the Year, William Bray, has served St. Arnaud Rotary International Club with distinction for more than 55 years, overseeing key projects such as the creation of the Rotary House accommodation at St. John of God, Ballarat; construction of St. Arnaud Aerodrome; providing \$40,000 to the community through the club's Drought Funding Program; and renovations to the sheep pavilion at Lord Nelson Park. Mr Bray has also served on St. Arnaud Hospital Board and is an inaugural member of the Saints and Sinners Bike Riding Group.

"William is recognised for his lifetime of accomplishments and steadfast commitment to his family, business and the community of St. Arnaud with the support of his wife, Jean," Cr Hyslop said. "They are an inspiration to us all."

### Two Awards

Cr Hyslop said following an overwhelming number of outstanding nominations in the Event of the Year/Community Group of the Year category, councillors decided to present two awards. The first went to St. Arnaud Fire Brigade's 150th Anniversary Torchlight Parade.

"The event honoured the dedicated and selfless volunteers of this incredible brigade," Cr Hyslop said. "What made this event truly special was the way it brought everyone together – it took years of hard work to bring it to life and the entire town rallied behind it."

Pebble Church Heritage Organisation is the Community Group of the Year, recognised for its dedication, passion and contribution to preserving St. Arnaud's history and enriching the community. In 2020, a passionate group of individuals saw a critical need to save an important part of St. Arnaud history, the Pebble Church. The group rallied, raising more than \$120,000 in just under two weeks, ensuring the beautiful, historic building would remain accessible to the public.

"Their work is a testament to what can be achieved when passionate individuals come together with a shared purpose," Cr Hyslop said.

Following the ceremony, attendees were treated to Devonshire morning tea courtesy of Friends of the Queen Mary Gardens.

### At Stawell

On Sunday afternoon, festivities moved to Central Park in Stawell, with attendees celebrating residents of Central and Grampians wards.

In announcing the shire's remaining Citizen of the Year, Cr Hyslop said Mrs Fearon was a dedicated and passionate person who had shown great commitment in researching and preserving Glenorchy's history.

"Through her tireless work she has uncovered the stories that make Glenorchy so unique, ensuring future generations will understand and appreciate the town's rich heritage," she said.

"Her passion extends beyond just research. Together with her husband, she has

created a breathtaking garden filled with stunning flowers and plants that has become a beautiful attraction for people to come and view."

Mrs Fearon also played a major role in organising the "Glenorchy Then and Now" event last year, which brought the town's history to life.

"The success of this event – and so many of her other initiatives – can be attributed to the countless hours of work Linda puts in, the attention to detail and her unwavering dedication to the community," Cr Hyslop said. "She reminds us of the importance of honouring our past while embracing the future."

### Other Central and Grampians Winners

Jo Betram is the 2025 Australia Day Hero of the Year, for her "selfless devotion to helping others".

"Jo is someone who has always given more than she has received, and who has made an extraordinary impact through her quiet acts of compassion and care," Cr Hyslop said.

"She is a pillar of kindness in our community and has helped people both privately and publicly, always there to lend a helping hand.

"Many of you may know her through her tireless volunteer work at the Cottage, located next to the Church of Christ in Sloane Street.

"Jo does what needs to be done, often quietly and without anyone knowing. Her impact is immeasurable."

### Young Citizens

Determined and talented athlete Xyrus Gragas and up-and-coming community leader Zachary Ford are joint Young Citizens of the Year.

Xyrus has been a dedicated member of local sporting groups from a young age, with athletics being one of his standout passions. Throughout the years, he has consistently competed at state and regional track and field championships with Stawell Little Athletics. This year, he reached new heights by competing at a national level for the first time, securing an impressive seventh-place finish. "What truly sets him apart, however, is his remarkable character," Cr Hyslop said.

• Continued on page 9



• Citizen of the Year John Beggs with mayor Karen Hyslop.



• Citizen of the Year: Linda Fearon.



• Community Group of the Year, Stawell Agricultural Society, left to right: John Simpkins, Cath Holden, Emma Bourke, Linda Taylor, George Holden, Larry McLean.



• Representatives of the St Arnaud Brigade 150th Anniversary Torchlight Parade.



# Northern Grampians Awards

• Continued from page 8

“Beyond his personal accomplishments, he has gone above and beyond to support and inspire others. He has made a real difference for many children.

“His achievements and the positive impact he has made on our community are inspiring.”

Cr Hyslop said Zachary had also proven age was no barrier when it came to making a difference.

“Whether it’s volunteering his time at community organisations or participating in events, Zach has consistently gone above and beyond,” she said. His volunteer activities include Meals on Wheels,

Stawell Community Carols committee, Grampians Community Health FreeZa youth program and Stawell Inter Church Council welfare cottage, where he became the first and only junior volunteer.

“Zach has shown incredible leadership and selflessness in everything he does, and it is clear that he has touched the lives of many in our community,” Cr Hyslop said. “His hard work, kindness and passion for giving back is an example to us all.”

## Community Group

Stawell Agricultural Society won the final award, Community Group of the Year. Cr Hyslop said the society exemplified the true spirit of community, driven by passion, hard work and dedication. “Faced with the challenge of a slowly fading agricultural show, they refused to let it slip away,” she said. “Instead, they rose to the occasion with an ambition that revitalised the Stawell Show in ways no one could have anticipated.

“On behalf of the entire community, I congratulate

this remarkable group of volunteers.”

## New Citizen

Cr Hyslop said another highlight of activities at Central Park was an Australian citizenship ceremony. Yu-En Jeng, of Taiwan, took the pledge and is now an Australian citizen.

“Citizenship ceremonies are one of the greatest roles that we get to participate in at council and I would like to congratulate Yu-En on making the decision to become a citizen of our wonderful country,” Cr Hyslop said.

She thanked everyone who organised and participated in the council’s Australia Day activities, including Stawell Australia Day Ambassador Kathryn Clayton, Stawell Brass Band, Sarah Tierney for singing the national anthem, and those who provided the barbecue – Stawell Woolworths, Lions and Country Women’s Association.

Navarre, Stuart Mill and Marnoo townships also hosted community-led Australia Day activities.



• Senior Citizen of the Year, William “Dick” Bray with his wife, Jean.



• Young Citizens of the Year: Xyrus Gragasin and Zachary Ford.



• Cr Murray Emerson presents Dusty Raiyn McIntyre with her Young Citizen of the Year award.



• Cr Karen Probst presents Kaye Medlyn with the Community Group of the Year award, on behalf of Pebble Church Heritage Association



• New Australian citizen Yu-En Jeng.



• Local Hero of the Year: Jo Bertram.



Office: 03 5494 3120  
Mike: 0408 316 394  
Brendan: 0427 794 479  
Nathan: 0409 525 805

For all Earthmoving works including:

- Shed pads, sheep yards, house pads
- Dam construction and fill in, channel fill in
- Driveways and roads
- Supply and Delivery of gravel, sands and quarry materials.

## Donnellon's Bulk Haulage

Pty Ltd  
**BUYING ALL GRAINS**  
**BULK CARRIERS of . . .**

- Gypsum
- Fertilizer
- Gravel
- Woodchips
- Road Base Materials

**Public Weighbridge 3008**  
**Phone Bill**  
**5492 2333 or 0428 136 483**

Mark and Raelene continue the Kelly and O'Halloran names, known and trusted for personal, dignified and professional service for over 60 years. From two of the smallest family owned businesses in the Mallee.



5492 2547  
**KELLY & SONS**  
90 Curlewis Street Swan Hill  
**swanhillfunerals.com.au**  
5032 1011  
1 Morrison Street, Birchip 3483  
kellyfuneralsbirchip.com.au 24 Hours 7 Days a Week

**MARK & RAELENE O'HALLORAN**  
**Funeral Directors AFDA**

*Enjoyment & Employment —  
Have Both, Shop in Your Own Town!*



# Living with the Land



## Dung Data to Help Improve Herbivore Distribution Maps

Detailed livestock models are important for land-use planning, disaster relief and food insecurity.

Researchers have used dung records to create high-resolution maps of herbivore distribution around the world. Their new study, recently published in *Nature Food*, reveals a strong positive relationship between dung presence and grazing pressure, meaning the amount of dung found in a particular location could help us understand approximately how many herbivores live there.

Many people consider dung simply as the manure left behind by horses and cows at country shows, or something to be avoided when you visit the cousins' farm. But dung is actually an important resource for millions of people worldwide.

Dung also acts a biological footprint – it can tell us a lot about our environment, such as what animals are grazing where, and what this might mean for environmental health.

Now, scientists from Australia, Spain, China and Saudi Arabia, led by Professor David Eldridge from UNSW Sydney, have produced the first global assessment of dung produced by livestock and native grazing animals in drylands – arid and semi-arid environments that occupy about 40% of the world's land area.

The research revealed hotspots of dung production, but also highlighted that broadly speaking, livestock and wild herbivores – animals like horses, cows and kangaroos that only eat vegetation – don't occupy the same spaces on earth.

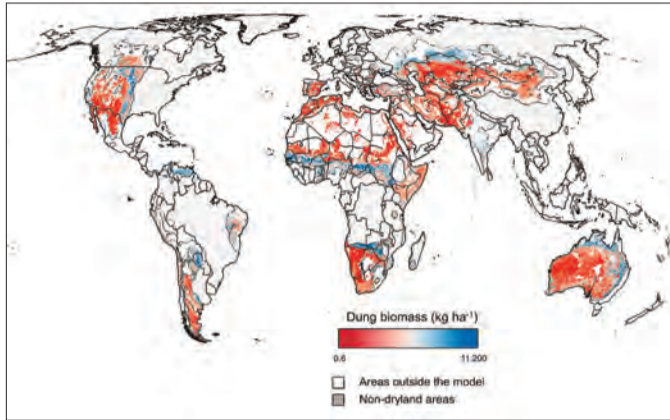
"Understanding where herbivores are distributed is important for a number of reasons," says Prof. Eldridge. "It helps us to improve our understanding of the grazing industry, like the spread of bovine diseases. If we have a better understanding of where animals are, we've got a better understanding of where we might need to target particular land management practices."

### Estimating Livestock Density

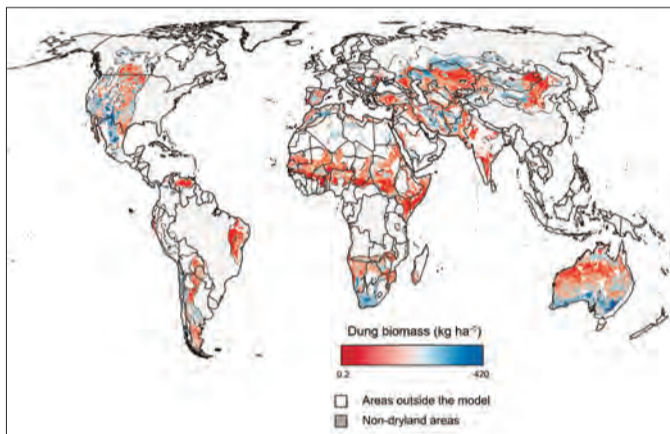
Current assessments of livestock density are based on crude estimates of environmental variables such as mean annual rainfall, temperature, and some soil variables. These environmental variables are broad indicators of habitats that are likely to be occupied by herbivores, because more productive systems generally have more grass and therefore support more herbivores.

International organisations such as the United Nations Food and Agriculture Organisation (FAO) need to know where livestock are concentrated, and in what numbers. To do this they use relatively coarse computer models.

Improving these existing methods of predicting herbivore



• Predicted distribution of livestock dung in global drylands.



• Predicted distribution of wild herbivore dung in global drylands.

distribution is central to a number of agricultural industries. So, Prof. Eldridge and his team set out to solve some of these challenges with a somewhat unusual solution.

Dung – a byproduct of meat production, a source of nitrogen and phosphorus fertiliser – is used in building construction, and as a fuel for cooking by millions of people around the world. "Measuring and mapping dung could be a useful resource to help these organisations fine tune coarse predictions of animal distribution," says Prof. Eldridge.

### Methods and Findings

The research team assembled 50 global datasets that included the mass of dung produced and measures of grazing pressure by different herbivores, including antelopes, sheep, and kangaroos.

Their analysis showed that all but one of these datasets showed strong positive relationships between dung production and grazing pressure.

"These data show a strong positive correlation, or positive relationship, between the amount of dung produced and animal grazing pressure," says Prof. Eldridge. "If we know how much dung there is, then we can predict where the animals are distributed."

The team also combined livestock and wild herbivore dung mass data from surveys at 760 dryland sites worldwide, representing independent measurements of herbivory, to generate high-resolution maps.

"The surprising thing that we found is that when you model where native herbivores are and where livestock are, there's some overlap, but in general, there are a lot of areas where they don't interact,"

says Prof. Eldridge. "This could be due to direct competition for resources or avoidance by wild herbivores of potential livestock-borne parasites and diseases."

The researchers located hotspots of dung production in central Africa, northern and eastern Australia, the Eurasian grasslands, east central India, and the west coast of the United States of America. Dung production was shown to be lower in north-central Africa and west-central China.

### Dung as a Scientific Tool

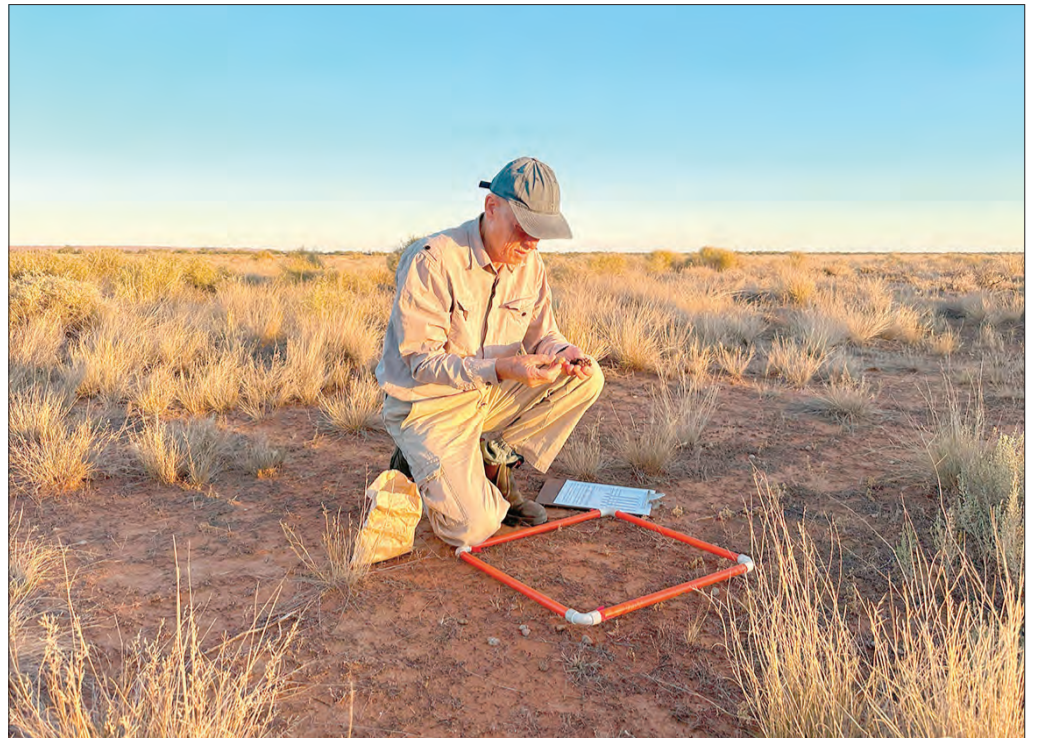
Global assessment of livestock distribution is critically important for land use planning, for estimating gross methane emissions, predicting global meat production, or predicting where livestock may be at risk from pests and diseases such as brucellosis.

It also improves the ability of organisations to predict trends in global food production and the impacts of drought and natural disasters on food security.

Counting dung can often be easier and more efficient than counting animals, Prof. Eldridge explains.

"For example, one paper shows how dung counts often give us a better estimate of elephant densities than aerial surveys of the animals themselves. Dung counts are also efficient ways of studying habitat preference of elusive herbivores that are hard to detect or occur in very low numbers," he says.

But dung can also help researchers at more local scales. "Knowing the location of dung in different paddocks can tell us about the habitat preference of different herbivores



Dung is actually an important resource for millions of people worldwide. Professor David Eldridge studies herbivore dung on a field trip to Fowlers Gap. Photo – UNSW

and how they interact. This could provide farmers with better information on where to place fences, watering points and other infrastructure to improve livestock production," says Prof. Eldridge.

Assessments of dung are not without their complexities, Prof. Eldridge explains. "Many farmers in Asia and Africa collect dung, reducing the potential field assessment

and therefore potentially underestimating the amount of dung produced by animals."

Some animals such as deer bury their dung, and in many tropical countries, dung beetles and termites break this dung down in just a few days, making regional assessments more difficult.

"These and other issues make it difficult to come up with robust assessments of animal densities," says Prof.

Eldridge. "However, even when we accounted for areas where people collected dung, there was still strong relationships with grazing pressure."

Despite the challenges, this research provides a world-first, comprehensive global map of the dung of livestock and wild herbivores in drylands, and paves the way for organisations to incorporate dung data into livestock maps and models.

## Manage Farm Risks With Online Program

Agriculture Victoria is inviting farm business owners and managers to take part in a free online business program.

The innovative program supports farmers to build on their knowledge and skills to strengthen their farm business and be better equipped to manage the risks associated with a variable climate.

The online program, starting in February on Wednesdays, runs over 6 weeks and is suitable for livestock, grains, mixed farmers, horticulturalists and apiarists, with past participants rating the program very highly for satisfaction and benefits gained.

Project Leader Kit Duncan-Jones said participants will improve their skills and knowledge to better prepare for and manage risk, adapt to change and strengthen their farm businesses.

"The course is designed to help farmers set and achieve their individual business goals and is relevant to those who are new to farming and young farmers, as well as more experienced farmers."

The program will be made up of 5 sessions on key farm management topics, including:

- Identifying and managing risks, strategic planning and setting business goals.
- Financial management, budgeting and profitable decision making.

- Managing people on farm, succession planning and farm safety.
- Climate risk and natural resource management.
- Business planning.

As part of completing the course, participants will be offered a one-on-one session with an experienced farm management consultant to review their business plan.

Mr Duncan-Jones said participants will be supported by Agriculture Victoria staff and farm business consultants from Rural People Co.

"Online delivery of the course allows farmers from anywhere in the state to participate, from the comfort of their own homes or workplace and without the added time commitment of travel."

"If you're a farmer who wants to better manage your business, strengthen your farm resilience to withstand future droughts and shocks,



and set up your farm for success now and into the future – this is the program for you."

To register your interest, please complete the short survey here: <https://forms.office.com/r/wUGjPY3MvJ>

For more information, contact Sarah Clack on 0417 316 345 or at [sarah.clack@agriculture.vic.gov.au](mailto:sarah.clack@agriculture.vic.gov.au)

The Farm Business Resilience Program is jointly funded through the Australian Government's Future Drought Fund and the Victorian Government's Future Agriculture Skills Capacity Fund.

Further information about the Program and the Future Drought Fund can also be found on the Agriculture <https://agriculture.vic.gov.au/farm-management/dry-seasons-and-drought-support>

## Trash to Treasure

One person's Trash is another's Treasure!

Turn your Trash into Cash by advertising it for sale in the "Times" classified pages. Phone the Donald office (5497 1222), or Birchip (5492 2735); email [advertising@buloketimes.com](mailto:advertising@buloketimes.com)

# Reuniting Fire-Affected Families

Australian Red Cross has opened "Register.Find.Reunite" and is urging people affected by the Dimboola Bushfires, to get in touch with their families and friends.

Fyowna Norton, of the Australian Red Cross said being separated from family and friends is one of the most stressful things a person can experience during an emergency.

"Not knowing where your loved ones are, not being able to contact them by phone or email adds to that anxiety," Ms Norton said.

"The service helps find and reunite family, friends and loved ones during a disaster."

If you or a loved one has been impacted by the Dimboola Bushfires, Australian Red Cross encourages you to register or enquire through the Register.Find.Reunite. service. People can register and look for someone with Register.Find.Reunite. on the Australian Red Cross website at [redcross.org.au](http://redcross.org.au) from a computer or any mobile device.

The Register.Find.Reunite. service matches registrations from people affected by an

emergency to enquiries made by their loved ones searching for news. Where a match is made, with consent, the person who made the enquiry will be notified.

It is important for emergency management agencies to know where people are during emergencies. By registering with Register.Find.Reunite. you are also letting important services know that you are OK and what support you may need.

# Could You be Buying Inflammable Clothing?

From RMIT University

Dr Rebecca Van Amber is an expert in textile and apparel sustainability, research and development, and designing test methods and experiments for textiles and apparel with specific properties and end uses (e.g. human health, sports, and the outdoors), as well as wear trials involving human participants.

The following are key points from an article by Dr. Van Amber, published by "The Conversation":

- A glow-in-the-dark jumper sold on Temu was recently recalled after causing severe burn injuries to an 8-year-old Queensland girl.

- The Australian Competition and Consumer Commission (ACCC) last year issued at least nine recall notices on products that didn't comply with the mandatory standard for nightwear for children. But highly flammable fabrics are common.

- The only naturally flame-resistant fibre is wool, along with all other animal protein fibres such as silk, alpaca, mohair and cashmere.

- Synthetic materials melt when burning. If they stick to the skin, they can cause severe injuries that are difficult to treat. Polyester made up more than 57% of global fibre production in 2023.

- Acrylic is the most flammable of all synthetics. Acrylic fibres are an inexpensive material that is commonly used to make jumpers that look and feel like wool.

- Smooth, tightly woven or knitted fabrics burn more slowly than lightweight or fuzzy fabrics. Fabrics with the highest fire risk are those with a pile or brushed surface (think cosy, fuzzy or furry fleeces, flannelettes and faux furs) and are composed of cotton, acrylic, polyester and

other synthetic fibres. These soft and fuzzy (and highly flammable) textile products are everywhere, and often at affordable prices.

- Women, older people and anyone who tends to wear loose-fitting garments that can more easily catch fire are at risk.

- Many costume pieces like capes, hoods, wings and tutus are excluded from children's product safety rules in Australia.

- Australian rules for fibre content labelling lapsed in 2019. Now, products only legally need care instructions. The ACCC has acknowledged there is no direct ban on selling unsafe products.

# One Hundred Years Ago

From the "Birchip Advertiser".

January 16, 1925.

## Local and General

**Wheat.**-37,000 bags of wheat have been delivered at the Birchip Station and that represents about half the quantity that will ultimately pass over the local weighbridge this season.

\*\*\*

**Road Works.**- The Shire engineer made an inspection of a number of roads throughout the Shire this week. Tenders will be called for a number of works.

\*\*\*

**Unwelcome Rain.**- There was a heavy downpour of rain last Monday night when 56 points were recorded. Farmers have made very little progress with harvest operations this week owing to the unsettled state of the weather.

\*\*\*

## Shire of Birchip General Business

The secretary was instructed to have the necessary repairs carried out to culverts on main road and east of Morton Plains railway station.

Cr. R. Barber stated the Shire's Regulations have not been adhered to in regard to the metal road in Cumming Avenue.

The motion of the books that before a licensed plumber can proceed to mend a broken water pipe, a deposit of £2 is to be lodged with the clerk of works, and, if the metal has not been pressed down to his satisfaction, the deposit will be retained.

Crs. R. Barber and H. Bolden moved that the motion be enforced in future, and that the same apply in Campbell Street. -Carried.

Crs. H. Bolden and J. Lockwood moved that the dummy fire plug in Cumming Avenue be erected in Sherwood Street near the fire Brigade hall. Carried.

\*\*\*

January 23, 1925.

## Birchip Police Court

Constable J. H. Sullivan proceeded against A. J. -----, for riding his motor cycle in Cumming Avenue, Birchip, on December 10, 1924, at a speed dangerous to the public.

Informant stated that at 7.45 p.m. on the above date, defendant rode his motor cycle

at a speed estimated at over 25 miles per hour. At the time there were a number of people and young children in the street and defendant's manner of riding was a menace to them.

The Police magistrate (Mr. H. McDonald) said that such practices were most dangerous and involved risk to the inoffending public. Owing to the defendant's youth he would take a more lenient view than he otherwise would have done and expected the defendant to heed the warning as each offence would be recognized more seriously in the future. A fine of £2, in default distress was imposed.

## Licences

William P. Parish was granted a Collector's licence. Wm. B. Harrowfield was granted a Hawker's license to carry wares by motor car.

\*\*\*

January 30, 1925.

## Local and General

**A Generous Gift.** -In the window of Mr. H. J.P, a beautiful set of cutlery is on view. The gift was very kindly donated by our energetic and very true sportsman, Mr. T. Dean, as a trophy to be raced for at the Birchip races which will be held on February 11. The cutlery is valued at £20, and contains 24 pieces. They are well and neatly set out in a case of Oak, a present a very nice appearance. The Race Club is greatly indebted to Mr. Dean for his generous gift, and it is to be hoped that he will prosper in his business for such an act.

\*\*\*

**Birchip H. E. School.** -Mr. R. C. Dean, Diploma of Education, Head master of the Higher Elementary School, wishes to notify the parents of Birchip and of the surrounding districts that the first term commenced on January 27th. Competition in life is now keen and promises to be keener still for the rising generation. Now is the time to equip the children so that they may take their place among the community with credit to themselves and honor to their parents. Birchip and district possesses a great asset, and it is the parents duty to see that their children reap all the ben-

efits that the school is able to offer. The school is very well equipped, up to date and possesses a very competent staff. Study the welfare of your children and consult the headmaster at any time convenient to yourself.

## Closer Settlement Board Meets Soldiers

The closer Settlement Board met at Wycheproof Court House on January 20th and was presided over by Mr. M. Malcolm, member of the Board, who was assisted by Messrs, Wilson, Harris, O'Grady and clerical staff from Melbourne.

This marks a new departure inaugurated by the Board which will be appreciated by firms who trade with settlers. Hitherto all accounts of the year's operations were sent to headquarters, Melbourne which of necessity caused a delay in finalizing. On Tuesday, however, some 25 settlers presented the accounts for the year's operations which were dealt with on the spot with dispatch.

This method should be satisfactory to the soldiers and merchants. At the Wycheproof centre a sum of approximately £700 will be released to the storekeepers and others in payments of sacks, manure and other stores.

The Closer Settlement board manages the whole of the settlement of soldiers - some 10,400. A sum of £24,000,000 is involved in this large undertaking; there are 2,000 Mallee Settlers. Whilst there has been a certain percentage of failures which is inevitable in all big schemes, taken on the whole it is considered that it will prove a successful policy.

In consequence of appeal made to the Board by Parliament concessions has been granted to the soldiers. Repayment of stock have been extended from 3 to 7 years. Repayments of advances 20 to 30 years and several other repayments have been made by more liberal - these apply to those men who have fallen into arrears to reduce any crushing debt.

The board is willing to deal fairly with all claims brought before it for extension of time.

\*\*\*

## Support services

### Adult

Lifeline: 13 11 14 | Text 0477 13 11 14  
[lifeline.org.au](http://lifeline.org.au)

Suicide Call Back Service: 1300 659 467  
[suicidecallbackservice.org.au](http://suicidecallbackservice.org.au)

Beyond Blue: 1300 224 636  
[beyondblue.org.au/forums](http://beyondblue.org.au/forums)

MensLine Australia: 1300 789 978  
[mensline.org.au](http://mensline.org.au)

StandBy Support After Suicide  
1300 727 247

### Youth

Kids Helpline: 1800 551 800  
[kidshelpline.com.au](http://kidshelpline.com.au)

headspace: 1800 650 890  
[headspace.org.au](http://headspace.org.au)

ReachOut: ReachOut.com

### Other resources

Head to Health: mental health portal  
[headtohealth.gov.au](http://headtohealth.gov.au)

Life in Mind: suicide prevention portal  
[lifeinmindaustralia.com.au](http://lifeinmindaustralia.com.au)

SANE: 1800 187 263 (10am-10pm)  
online forums: [saneforums.org](http://saneforums.org)

Aboriginal and Torres Strait Islander: [13YARN.org.au](http://13YARN.org.au) or 13 92 76  
Lesbian, gay, bisexual, trans, and/or intersex: 1800 184 527 [qlife.org.au](http://qlife.org.au)  
Culturally and linguistically diverse: [embracementalhealth.org.au](http://embracementalhealth.org.au)

Nutrien  
Harcourts



# AUCTION

## Culgoa/Wycheproof

### 433 ACRES / 176 HECTARES

### PRODUCTIVE CROPPING/GRAZING

Known as "Jones"

- ✓ Excellent Fencing
- ✓ Pipeline connected
- ✓ Bitumen Road Access
- ✓ Machinery/Hay Shed 90x35ft
- ✓ 2x Feedlot Pens
- ✓ 1x5000g, 1x 3000g Polytank, 5 Troughs
- ✓ 2 x 100 Tonne Sealed Silos, All Weather Access
- ✓ Excellent History of Gypsum and Chemical

To be Auctioned on **February 28, 2025** at the Culgoa Hall at 10am.

**Terms:** 10% deposit on signing, balance 60/90 days with immediate working possession.



Agent Joe O'Reilly  
M 0427 329 911

209 Karinie St, Swan Hill  
(03) 5032 9911

Nutrien  
Harcourts



[brcswanhill.nutrienharcourts.com.au](http://brcswanhill.nutrienharcourts.com.au)

# Struggle Under Land Tax Burden

Victorians are struggling to pay Labor's highest-in-the-nation property taxes on time, as new figures confirm that more than one-in-three unpaid land tax bills are more than 12 months overdue.

The Department of Treasury and Finance (DTF) 2023-24 annual report confirms 33.45 per cent of overdue debt – that is, unpaid tax bills are more than 12 months overdue, 34 per cent higher than the target level.

The Nationals' Member for Mildura, Jade Benham said that this data shows that Victorians are really struggling to pay Labor's crushing property taxes.

"With the Government imposing the highest property taxes in the nation, it should be no surprise that so many Victorians are under extreme financial pressure and struggling to pay on time," she said.

"This data provided by DTF highlights the unachievable financial expectations from the government when

they are taxing Victorians to the max.

"Under Labor, Victorians are paying the highest property taxes in the nation, as the state's net debt is forecast to reach a record \$187.8 billion by 2027-28 and interest repayments alone are expected to exceed \$1 million an hour, which is astonishing.

"There is so much more we could be doing with that money."

Ms Benham said that Labor's tax bill backlog will only worsen as their latest land tax hikes add even more pressure to household budgets, rents, property prices and further weaken confidence in the residential construction sector.

"We have food producers being hit with late frosts and increasing costs," she said.



• Jade Benham

"There are levers that the government could pull to ease the burden, but they just see us as a cash cow to try to tax their way out of debt.

"This is yet another example of Victorians paying the price for Labor's financial mismanagement."



# Police Beat



## Gannawarra

**Fire:** CFA and police were called to a house fire in Koon-drook in the early hours of Monday morning. The home was extensively damaged but thankfully the occupants were able to escape without injury. The fire is not being treated as suspicious.

## Swan Hill

**Trespass:** At about 4.30 a.m. on Saturday the 25th of January, a group of people were seen hanging around a vehicle parked in McAlpine Lane, Nyah. They have jumped into a vehicle and driven off. It appears at this stage there was nothing taken from the vehicle.

**Damage:** Between 1 and 2 a.m. on Friday the 24th of January, the victim was woken by loud banging at her front door in Cadell Street, Swan Hill. When she checked on the door in the

morning, she found that the security door had been damaged.

**Car fire:** At about midnight on Saturday the 25th of January, police and CFA attended Miles Court, Swan Hill, where a car was on fire. The heat from the fire also caused damage to another vehicle. The cause of the fire is under investigation.

**Thefts:** Over the past week there have been numerous thefts from motor vehicles and theft of bicycles. On Wednesday, the 22nd of January, a 35-year-old male was arrested and charged with numerous offences. He was bailed to attend court at a later date.

**Theft from motor vehicle:** Between 7.30 p.m. on Thursday the 23rd of January and 6.30 a.m. the following day, offenders have gained entry to a vehicle

parked in Burton Street, Swan Hill, and stolen a backpack containing a laptop and various other property. A member of the public located the laptop in Norton Park and handed it in to police.

**Theft:** Between 8 p.m. on Tuesday the 21st of January and 1 p.m. the following day, 22 golf clubs were stolen from the front yard of a property in Stradbroke Avenue, Swan Hill. A camping swag was also stolen. The items had been placed on the lawn listed for sale.

**Theft:** Between 9.30 a.m. and 12.30 p.m. on Monday the 20th of January, the victim had parcels delivered to her Nalder Drive property. During that time someone has stolen those parcels.

**Theft:** Between 5 p.m. on Monday the 20th of January and 8 a.m. the following day, two e-scooters have been stolen from under the carport of an address in High Street, Swan Hill.

**Theft:** Between 9 p.m. Tuesday the 21st of January and 7 a.m. the following day, offenders have attended an address in Naretha Street Swan Hill and stolen a red Pathfinder 140XL mobility scooter.

## Robinvale

**Carjacking:** At about 10 p.m. on Saturday the 25th of January, the female victim pulled into her garage at her Robinvale home. A male opened the door whilst the victim was still inside. The male forced her out of the car and drove off. The vehicle, a red Subaru Forrester wagon was recovered in Mildura.

## Buloke

**Fire:** At about 6 a.m. on Friday the 24th of January, a home in Dempsey Street, Wycheproof, has caught fire. CFA attended and extinguished the fire. The occupant was not home at the time. The fire is not being treated as suspicious.

# Church Notices

## DISTRICT CATHOLIC CHURCHES

### "East Wimmera Parish"

Birchip 10.30 a.m.  
(Livestream out to churches without Mass)  
Boort 10.30 a.m.  
(Livestream in)  
Banyena No Mass  
Charlton 10.30 a.m.  
(Livestream in)  
Donald 8.30 a.m.  
St. Arnaud (Sat.) 7.00 p.m.  
Wycheproof 10.30 a.m.  
(Livestream in)

Fr. Gerry Prunty  
0419 247 779

Parish Co-ordinator  
- Noeline Hogan: 0476 617 976

# The Ettamogah Pub Mob



© Southern Equity  
Inv Trust 2014.  
www.ettamogah.com

"I don't know what happened Constable ... I just got here!"

# Charlton 100 Years Ago

(Information from "East Charlton Tribune")

January 24 to 28, 1925.

**Culvert Mishap:** The bridge on the Yeungroon Rd was the scene of a mishap lately. Two horses on a wheat wagon belonging to Mr W. Cossar were injured as the result of slipping through a plank, and one of them (a mare which was badly skinned) will not be in action again for some time. Mr W. Redgen rendered splendid assistance, bringing a plank temporarily to make good the passage. Cr T. R. Edyvean, at the January meeting of the Charlton Shire Council, made reference to this mishap, and stated that he had heard that the wagon (on which were 60 bags of wheat), was hung up for two hours. After discussion, it was decided to adopt the engineer's recommendation to replace the present 6 inches by 5 inches decking with the stronger 10 inches by 5 inches material.

**Band's Big Move:** An important decision was reached at a meeting of the Brass Band Committee. On the motion of Messrs C. E. Williams and L. Cassell, it was resolved to proceed with the erection of the Rotunda. It was moved by Messrs J. Gane and G. W. Kirk that a sub-committee, consisting of Messrs Williamson, Cassell, E. Dabron, J. McAuliffe and the secretary (A. R. Jenkins), be appointed to obtain plans and specifications, call tenders etc. A donation of £2 2/- by Mr R. Nolting, for the best attendance of members at band practice for 12 months, was won by Mr John Fanning, Mr J. Grinham and Mr Roy Grinham, who only missed one practice. The secretary was instructed to procure 3 band stands, with names etc, engraved thereon, to be presented to the winners.

**Crop Competition:** The judge (Mr Robert Blackwood) for the Agricultural Society's Crop Competition reported to the committee having made the following awards: First prize, Mr Thomas Jenkyn, Barrakee; second prize, Mr G. Cox, West Charlton; third prize, Mr G. Parish, West Charlton; fourth, Mr A. J. White, Dooboobetic; fifth, Mr T. N. Judd, West Charlton. The judge had a few suggestions - wheat does best on a firm shallow seed-bed; oats are just the opposite, they like a deep seed-bed. He prefers the spring tooth or rigid tyre Combine for seeding.

Dr W. E. Wilson, Mrs Wilson and family have returned from an enjoyable holiday, spent chiefly at Brighton. They also, however, visited various parts of the State, including Yallourn, the headquarters of the great new electricity scheme. Dr Wilson brought back with him a latest model Vauxhall car - the only automobile of that famous British make owned in Charlton. It is a magnificently-finished and upholstered car, of 26-60 horse power.

**Among the Athletes:** To those who have at heart the physical development and

general welfare of our young fellows, it is both instructive and interesting to watch the members of the Charlton Harriers' Club training at the Showgrounds of an evening. The course of exercises through which they go is of an all-round nature, providing variety and general development. Boxing, putting the weight, sprinting, distance running, and skipping all figure on the nightly programme; and their keenness is a credit to the lads. Mr J. Foxwell, who supervises the training, is unquestionably an enthusiast. He has measured a track for 100 yards, and is making a circle round the ground for the longer distances, while hurdles are being placed at points.

**Wedding Bells:** Miss Jessie Grace, eldest daughter of Mr and Mrs R. E. Churchill of Teddywaddy, married Mr Lindsay Gordon Lauder, at St Thomas's Church, Essendon. The two bridesmaids were Miss Phyllis Churchill and Miss Ida Lauder. Mr F. H. Churchill was groomsman. A reception was held at the Café Royal. Between 30 and 40 relatives were seated at the tables which had been beautifully decorated with the bridegroom's battalion colours. On the bridal table was a handsome three-tiered wedding cake, a gift to the bride. The honeymoon was spent at Warnambool and Portsea.

**Camera on Charlton:** The current issue of the "Weekly Times" contains an interesting series of photographs of Charlton, including the Weir; the Post Office; the Soldiers' Memorial; two views of High St; the State Savings Bank; excavating for the new bridge; and the Mechanics' Institute and Free Library. We are, however, somewhat amused, but not exactly flattered, to learn that "Charlton is an important Mallee town, round which big crops are being cut." We cher-



• The Weir, Charlton.



VALENTINE SERIES NO. 177

HIGH STREET, SHOWING SOLDIERS' MONUMENT, CHARLTON

ished the (apparent) delusion that we had got beyond the "Mallee" stage.

## MICHAELS OF DONALD

**Belvedere** By George Crenshaw  
www.belvedere-cartoons.com



"If I were you I would do something about that throat Dear"

## WYCHEPROOF LINO PRINT WORKSHOP



Sunday 16th Feb • 10:30am - 3:30pm

WYCHEPROOF TRAIN STATION

NO COST • LUNCH PROVIDED • 15 PLACES AVAILABLE

BOOKINGS PLEASE CALL CUSTOMER SERVICE 1300 520 520

THIS INITIATIVE IS FUNDED BY THE AUSTRALIAN AND VICTORIAN GOVERNMENT'S COMMUNITY RECOVERY HUBS PROGRAM



# Amazingly and Wonderfully Made!

Boy meets girl in the world of tennis and a few years later they are engaged to be married, such as it is for the current Australian no. 1 male tennis player, Alex de Minaur and the British no. 1 female player Katie Boulter.

Tennis is a great game not only for meeting new people, but it is also good for physical exercise, developing skills, relaxing and entertainment. I enjoyed good conversation with a Canadian couple sitting alongside me visiting the Australian Open for the first time. They were amazed at the large number of people attending.

The action scenario for the beginning of a match goes something like this: The central umpire calls, "Ready, Play!" The first serve is flat and aimed precisely down the "T" section of the service boxes. The opponent sees the ball coming toward him/her at perhaps 190 kilometres per hour and in a split second is reaching with straining muscles and tendons and remarkable eye/hand co-ordination to, not only intercept the speeding ball, but to hit it back into the court at the far end making the return as difficult as possible for the opponent to handle.

The point may finish quickly, but often many strokes are played – brains are thinking quickly, muscles are straining, sometimes feet are sliding on the plexicushion surface with rapid braking and change of direction, heart is beating fast, breathing rate speeds up, sweat oozes through skin pores cooling the body.

Then the point is finished – one player will be experiencing disappointment and the other elated at winning a hard won point. Then the next point may begin with a slice serve causing the tennis

ball to slide away from the opponent's racquet. The opponent struggles to get racquet to the ball and hits a short return. In anticipation of this, the server has moved close to the net and volleys the ball away for a winner. So the game continues point after point, game after game... set after set. All fascinating stuff for the tennis fans!

One of the things I enjoy about watching these elite players is their athleticism. With training and discipline, the human body is capable of amazing things. Professor Stuart Burgess writes, "The human body contains the most breathtaking and brilliant design of anything known to humankind".

While playing a game of tennis, the human brain receives millions of pieces of information every second from sensors around the body. It sends out vast amounts of information to control organs and many muscles simultaneously. Neuro-scientists tell us that the human brain has as many as 100 billion neurones and with around 1000 connections (synapses) per neurone, this leads to near 100 trillion connections in the brain. Incomprehensible complexity and capacity!

The Bible tells us, "We are amazingly and wonderfully made" (Psalm 139:14). The human body has incredible physical capability but there is much more. The Bible describes us as tripartite, "spirit, soul and body" (1 Thessalonians 5:23). There is a soul – this enables: self awareness and a unique conscience, giving us



• Bruce Stewart

a sense of moral awareness, hence development of character, emotions, an ability to think and reason and communicate at deep levels and have abstract and rational thought. We are designed to come and know and follow Jesus Christ, who is the "Way, the Truth and the Life" (John 14:6). In Him we find purpose in life, forgiveness and joy within on our earthly journey and a wonderful hope which stretches into eternity.

In this world where there is so much mad, bad and sad news (caused by human sin and rebellion), it is good that, at the tennis, thousands of people can relax and enjoy. It is special seeing people from many nations interacting together as players, officials and spectators. As we drive home at the end of a day at the tennis, we can indeed be thankful for the gift of life, for the freedom we have to play or observe tennis and other sports, and for the fact that we are indeed "amazingly and wonderfully made" by our Creator. Enjoy the tennis or whatever you like to do to relax!

Bruce Stewart.



• Australian Open tennis event... Boy meets girl in the world of tennis and a few years later they are engaged to be married, such as it is for the current Australian no. 1 male tennis player, Alex de Minaur and the British no. 1 female player Katie Boulter. Tennis is a great game for not only meeting new people but it is also good for exercise, developing skills, relaxing and entertainment – and for taking photos of players – as I have of Alex and Katie (below) and many others. (Sadly Alex lost the quarter final against Skinner who played exceptionally well!)



• British no. 1 female player Katie Boulter – fiancée of Alex.



• Watching the tennis alongside Neil, Lee, Paul and Ken with thousands of others.

## Birchip Pennant Teams

Birchip Grey to play Berriwilllock at Birchip 9.30 a.m., February 1, 2025.

### Division One

J. Blainey, M. Spicer, G. Cartwright, M. Bowen (s)

L. Scott, N. Noonan, O. Reid, D. Ryan (s)

K. Donnellon, B. Hogan, R. Bragg, R. Haddrick (s)

### Division Two

G. Smith, P. Bragg, R. Ince, C. Reid (s)

L. Blair, S. Fraser, M. Connelly, P. Hogan (s)

Meet at bowling club 9.00 a.m.. Afternoon tea please.

Birchip Maroon to play Woomelang, at Woomelang 9.30 a.m., February 1, 2025.

### Division One

G. Trollope, T. Grogan, J. Reid, K. Reid (s)

P. Gould, D. Barker, T. Doran, A. Lee (s)

R. Cooper, M. Hogan, G. Martin, W. Clarke (s)

### Division Two

L. Whitling, G. Hogan, B. Ryan, K. Hagley (s)

S. Teggins, Bindi, J. Petrie, R. Barr (s)

Meet at 8.15 a.m..



## The Donald Family Clinic

will be **CLOSED**

from **5:30pm Thursday 13<sup>th</sup> February 2025**

& will re-open **8:30am Monday 3<sup>rd</sup> March 2025**

EWHS - Donald Campus will have an on-call doctor available during this time, they can be contacted on **5478 6200**

For EMERGENCIES please call **000**.

## Your Blood is Worth Bottling

If you are visiting Ballarat or Bendigo and have a bit of time to spare, a trip to the Blood Bank would be a very rewarding experience. You will need to book, by phoning 13 14 95.



• Take care on the roads – no one is safe from careless drivers.

## Wimmera Mallee Cricket Ladders

	"A" Grade					
	P	W	L	D	Bye	Pts
Donald Jeffcott .....	11	10	0	0	0	33
Marnoo .....	10	7	2	0	0	23
St Mary's .....	11	5	5	0	0	15
Birchip .....	10	4	5	0	0	15
St. Arnaud .....	11	3	7	0	0	11
Southern Mallee.....	11	0	9	0	0	1

	"B" Grade					
	P	W	L	D	Bye	Pts
Charlton .....	11	8	2	0	0	27
Watchem .....	11	7	3	0	0	25
Donald-Jeffcott .....	10	7	2	0	0	21
Southern Mallee .....	11	2	5	0	0	11
St. Mary's .....	11	2	6	0	0	11
Birchip .....	10	0	6	0	0	3

# Anglers Locked in at Lock 9

(Contributed)

The Donald Angling club headed up to Ned's Corner at Lock 9 for their annual Australia Day Long weekend competition. Glorious weather, great company and one or two good fishing yarns made for an enjoyable weekend for all in attendance.

The competition started at 7 a.m. on Saturday and concluded at 7 p.m. Sunday, where 25 seniors and 4 juniors registered to compete for the bragging rights for the heaviest fish.

Who said "Ladies can't fish?" Well, Megan Jardine proved this wrong landing her first ever catch of Murray Cod with a 56cm, and then to outshine the men, she landed her prize winning cod of 75cm 10

minutes later! This gave Megan the bragging rights and winner of the competition for the longest cod caught. Gary "Narra" Dunstan came in a close second with a 73cm cod.

Not to be out fished by the "missus", Jeremy Jardine, in the last hour of the competition, took home first prize for the longest Golden Perch at 58cm. Carl Jeffery finished second with his Golden Perch measuring in at 52cm.

Longest bag of native fish was won by Leigh Nunn, hooking seven Golden Perch and one 60cm Murray Cod, totalling 341cm. Next in second place was Adam "Bud" Campbell with five Golden Perch and one cod at 57cm and a total of 252cm.

It was great to see a few juniors enjoying themselves and trying out their fishing skills, with some even "out-catching" the older and more experienced "fisherman" over the weekend.

## Junior Winners

Zaiden Mitchell won the longest Golden Perch with a 45cm and not far behind him with a 41cm Golden Perch was Chase Campbell.

Chase also took out the prize for the longest bag of native fish with four Golden Perch and two cods at 57 and 59cm respectively. A total of 266cm, just out-fishing his old man! Looks like there will be plenty of fish to eat in the Campbell household – no cooking for you, Kath!

During the weekend three oversized Murray Cod were caught and released by Barry "Cocky" Cockfield with an 86cm and Chris Wood with two at 84 and 82 centimetres.

In total fifty-two Golden Perch and nine Murray Cod were registered during the weekend's competition.

A great weekend was had by all with the usual shenanigans, laughter, fellowship and good fishing.

Anyone who would like to come along to our next competition on the Labour Day long weekend in March will be most welcome. Venue TBA.

For further details, come along and join the Angling Club on Wednesday nights at the club rooms, at 5.30 p.m., you will be made most welcome.

Give a man a fish, and you'll feed him for the whole day. Teach a man to fish, and you'll get rid of him for the whole weekend!



• Chris Wood celebrating with his catch and release 84cm Murray Cod.



• Megan Jardine with her prize winning 75cm Murray Cod. "The smile says it all!"

## North-Central Pennant Bowls

This Week's Selected Club Teams



### DIVISION ONE

Round 13, Saturday, February 1

#### Donald Golf v. Wedderburn

DONALD GOLF  
W. Livingston, G. Geddes, A. Humprey, D. Pettifer (s)  
G. Stopps, B. Murray, S. Hollis, P. Hibberd (s)  
M. Frank, R. Adams, R. Reseigh, G. Rigby (s)

Note: Early start at 10 a.m.  
WEDDERBURN  
Team not available

#### Wycheproof v. Donald

WYCHEPROOF  
A. Jones, J. McLean, B. MacDonald, J. Grylls (s)  
E. Rayes, G. Coatsworth, N. Coles A. Mead (s)  
P. Coles, A. Coatsworth, D. Groves, G. Allan (s)  
Emergencies: Nicholls, Rayes, Coatsworth, Prater, McLennan.

DONALD  
Team not available

#### St. Arnaud Country Club v. Charlton

ST. ARNAUD COUNTY CLUB  
S. Elliott, R. Pole, M. Esmore, W. Rodger (s)  
D. Moulday, L. Lynch, D. Mullins, T. McDonald (s)  
F. Rodger, M. Pole, J. Nevill, J. Abbott (s)  
Cards: T. McDonald. Manager: S. Elliott.

CHARLTON  
R. Porter, D. Gretgrix, J. Cox, K. North (s)  
M. Hamley, W. Southwell, M. O'Brien, K. Willey (s)  
B. Laffin, P. Watts, J. Headon, L. Southwell, (s)  
Manager: K. Willey. Cars: Porter, O'Brien, Laffin.  
Meet at bridge at 12.15 p.m.

### DIVISION TWO

Round 13, Saturday, February 1

#### Donald Golf v. Wedderburn

D. Adams, B. Brasier, A. Dionopolous, L. Borden (s)  
B. Bayles, M. Raynes, P. Raynes, G. Wood (s)  
G. Bowles, J. Slater, B. Dixon, S. O'Shea (s)

Note: Early start at 10 a.m.  
WEDDERBURN  
Team not available

#### Wycheproof v. Donald

WYCHEPROOF  
D. Nicholls, S. Barratt, Jeannie Grylls, P. Connolly (s)  
V. Grant, L. Milburn, D. Denney, R. Grylls (s)  
C. Jones, P. Bagley, R. Coles, M. Nicholls (s)  
Emergencies: Nicholls, Rayes, Coatsworth, Prater, McLennan.

DONALD  
Team not available

#### St. Arnaud Country Club v. Charlton

ST. ARNAUD COUNTY CLUB  
B. Medlyn, D. McAllister, K. Meade, J. Needs (s)  
N. Bales, G. Shaw, N. Robinson, A. Bond (s)  
G. White, S. Atkinson, P. Mullins, C. Webb (s)  
Cards: G. White. Manager: J. Needs.  
Emergencies: J. Jorgensen, T. Coloe.

CHARLTON  
E. Rosewall, G. Thompson, J. Ong, D. Finlay (s)  
D. Beaty, G. Barnard, S. Harper, G. Wain (s)  
B. Chester, B. Patton, W. Roberts, G. Bateson (s)  
Manager: D. Beaty Emergencies: Gahan, Irwin.  
Cars: Ong, Barnard, Roberts. Meet at bridge 12.15 p.m.

## "Grey" Day for Birchip Bowls

The clash of the hometown rivals took place last on Saturday, January 25, with the Greys coming out on top in both divisions, and now with one game remaining, Maroons need a win on Saturday to gain entry back into the final four.

Division 2 saw Grey skipped by Peg Hogan go down 16-27 to Matt Barr's rink. Peg's rink led until just after smoko and succumbed to the strong finishing Maroon rink. Well done Matt Barr, who is one of the club's newer members taking on the skipping role.

In the other Division 2 game the Greys, led by their skipper Carolyn Reid, had a big victory over Ray Barr's rink 47-24, the highlight of the big win being an eight scored by the Greys on end 19. Looks like there'll be some badges to be presented.

In Division 1 again the Greys had a good win, losing only one rink in which the up-and-coming new gun of the Tyrell, Andrew Lee, collected

another scalp when his rink overcame a determined Richard Haddrick rink to score a 30-23 victory.

"Frogga" Bowen had a grin on him like a shot fox after his rink's victory over club stalwart Kevin Reid, 32-14. Grey is just hoping it hasn't poked the bear too early with finals coming up. It is believed it took a couple of people to help get Frogga's head in the door at the pub on Saturday night.

Des Ryan and his rink had a battle all day but got away in the finish to beat the Wayne Clark rink, 26-16. Great to see Des is in impressive form leading into the finals.

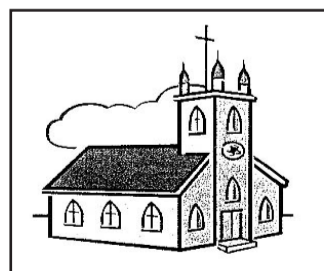
There is only one game to go before the finals, so everyone is encouraged to get along

to training on Wednesday night to build confidence as teams march towards another finals campaign.

Congratulations to Blue White and Sue Allen on winning Tyrell Bowling Association's Champion of Champions Singles played at Birchip on Sunday, with commiserations to Richard Haddrick and Carolyn Reid, who were both runners-up on the day.

The clubs send their heartfelt sympathy to the Quambatook community on the tragic loss of one of its best. The Birchip Bowling club knows that its Quambatook bowling compatriots are suffering immensely at this time. God bless you all.

"Gotta be up"



## CHURCHES

  
**GRANITE**  
Community Church  
www.granitecommunitychurch.com  
At Granite Church  
10.30 a.m.  
Baptist Union of Victoria

## Professional Funeral Home

Providing a caring and compassionate service to the surrounding districts 24 hour service.

Philip and Karen Davey

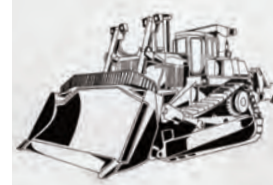
 A.G. ADAMS & Sons

OFFICE & CHAPEL Ph. 5452 1111  
39 Fitzroy St, Kerang  
info@adamsfunerals.com.au

## R. & L. DOUGLAS EARTHMOVING

### BULLDOZER WORKING IN THE DONALD AREA

- Filling in dams channels
- Digging new dams
- Shed pads
- Farm clean ups.



For all your earthmoving needs  
**CALL ROSS 0447 883 111**

## Leaders Stumble

Wycheproof and Wedderburn, currently first and third on North Central Playing Area's mid-week pennant ladder, suffered late season setbacks on Tuesday, when they were defeated by Donald and Donald Golf respectively.

With just one round of the home-and-away season remaining, the losses are not season threatening, but have the potential to unsettle the two teams in the lead up to the finals series.

Wycheproof's defeat was unexpected, playing at home against seventh placed Donald, but proved that on any given day, if one team is slightly off its game and its opponent makes the most of its chances, anything can happen.

Beryl Milne's rink of experienced campaigners Joan Wood, Marion McEwen and Brenda Brennan was the game changer for Donald, securing a 22-shot victory over Matt Nicholls.

Margaret Quick, teaming with Kay Wyllie, Alison McEwen and Ev Adams, also finished with a positive result, out-bowling Dale Groves's rink by 7 shots.

Jono Grylls was Wyche's only winning skipper, defeating Lindy Morgan by 3 shots to secure 2 points.

Donald Golf can thank Geoff Rigby's rink for its thrilling one-shot win over Wedderburn, banking 8 points to 4. It is now firmly entrenched in second place, assured a berth in the second semi-final, when it will meet Wycheproof.

Wedderburn was the victor on the other two rinks, Alan Jackson downing Peter Hibberd by 4 shots, and Andrew Caserta finishing 3 shots to the better of Shane O'Shea.

The loss opens up a 16-shot gap between Golf and third placed Wedderburn, with St. Arnaud making up the top four. Boort sits in fifth place, 7 shots behind St. Arnaud.

St. Arnaud and St. Arnaud Country Club produced their customary close contest, with host St. Arnaud emerging with a 7-shot win and banking 10 valuable premiership points.

Lloyd Goddard secured an 8-shot win over Rhonda Pole, the margin proving significant in terms of St. Arnaud's overall victory, as Phil McRae's 2-shot winning margin over Country Club's Des Moulday was cancelled out by Patricia Goode's 3-shot victory over Allan Welsh.

Next Tuesday, weather permitting, Boort will need to defeat Wedderburn to have any chance of displacing St. Arnaud, which takes on second placed Donald Golf, and also needing a win to retain a berth in the first semi-final.

If the ladder positions stay as is after the completion of round 14, Wedderburn will

play St. Arnaud in the first semi-final, the winner to take on the loser of the second semi-final, to be contested between Wycheproof and Donald Golf.

Details:  
**Wycheproof 55-2 lost to Donald 81-10.**

Andrea Coatsworth, Shirley McKenna, Aaron Mead, Matt Nicholls (s) 12 lost to Joan Wood, Marion McEwen, Brenda Brennan, Beryl Milne (s) 34.

Lorraine Milburn, Vince Grant, Jeannie Grylls, Jono Grylls (s) 20 d. Deborah Knight, Marg Kelly, Beth Hollis, Lindy Morgan (s) 17.

Cheryl Rayes, Lynette Nicholls, Alan Jones, Dale Groves (s) 23 lot to Kay Wyllie, Alison McEwen, Ev Adams, Margaret Quick (s) 30.

**Wedderburn 73-4 lost to Donald Golf 74-8.**

Robina Little, Sandra Standfield, Amy Roberts, Laurie Witham (s) 22 lost to Colleen Raynes, George Wood, Joyce Hollis, Geoff Rigby (s) 30

Robert Ashley, Joan Murnane, Ruth Hall, Andrew Caserta (s) 29 d. Corazon Stopps, Shirley Evans, Robert Reseigh, Shane O'Shea (s) 26.

Lance Standfield, Judy Matthews, Sandra Steel, Alan Jackson (s) 22 d. Bill



• Wedderburn skipper, Laurie Witham delivers his bowl. Other bowlers, left to right, Robert Ashley, Corazon Stopps, Alan Jackson and Geoff Rigby.

Livingston, Beris Jones, Brenda Dixon, Peter Hibberd (s) 18.

**Charlton 61-8 d. Boort 58-4.**

Jeff Cox, Bernard Laffin, Dale McCallum, Ken North (s) 15 lost to Lynn Carrall, Tania Noles, Dorothy Gibson, John Gibson (s) 19.

Mark Hamley, Eily Rosewall, John Headon, Kevin Willey (s) 20 lost to Gillian Tweddle, Phyl Baker, Craig

Newsome, Laurie Maxted (s) 21.

Richard Porter, Wendy Laffin, Doug Finlay, Lynne Southwell (s) 26 d. Sarah Polack, Pam Gould, Joan Earl, Thelma Moresi (s) 18.

**St. Arnaud 69-10 d. St. Arnaud Country Club 62-2.**

Anne McNally, Margaret McRae, Paul Micallef, Allan Welsh (s) 18 lost to Steve Atkinson, Paul Mullins,

Amanda Marland, Patricia Goode (s) 21.

Andrea Tyler, Dianne Ostarcevic, Marie Hufer, Phil McRae (s) 21 d. Paul Mullins, Suzanne Wright, Arnold Bond, Des Moulday (s) 19.

Heather Stevenson, Margaret McIntyre, Laurence Goodwin, Lloyd Goddard (s) 30 d. Dianne Fullarton, Yvonne Templar, Heather Esmore, Rhonda Pole (s) 22.



• Donald Golf and Wedderburn closely watching the bowls delivered or about to be delivered.



• Donald Golf bowler, Corazon Stopps, delivers her bowl. Her match was decided by the last bowl of the day.

## MICHAELS OF DONALD

**We service ALL makes & models**  
Small, Medium, Large & 4x4

**FEBRUARY SERVICE SPECIAL**

**Air Conditioner Service & Sanitization \$220**

Courtesy drop-off & pick-up or loan car available

**TO BOOK**  
Ph. 5497 1203  
13-15 McCulloch St, DONALD

### MIDWEEK PENNANT BOWLS

Positions of Teams, after round 13

	P	W	L	D	Bye	F	A	SD	%	Pts
Wycheproof	13	11	2	0	0	1020	784	236	130	123
Donald Golf	13	10	3	0	0	958	804	154	119	108
Wedderburn	13	7	6	0	0	1004	807	197	124	92
St. Arnaud	13	7	6	0	0	786	862	-76	91	81
Boort	13	6	7	0	0	813	911	-98	89	74
Charlton	13	5	8	0	0	787	837	-50	94	61
Donald	13	3	9	1	0	795	943	-148	84	48
St. Arnaud Country Club	13	2	10	1	0	793	1008	-215	79	37